

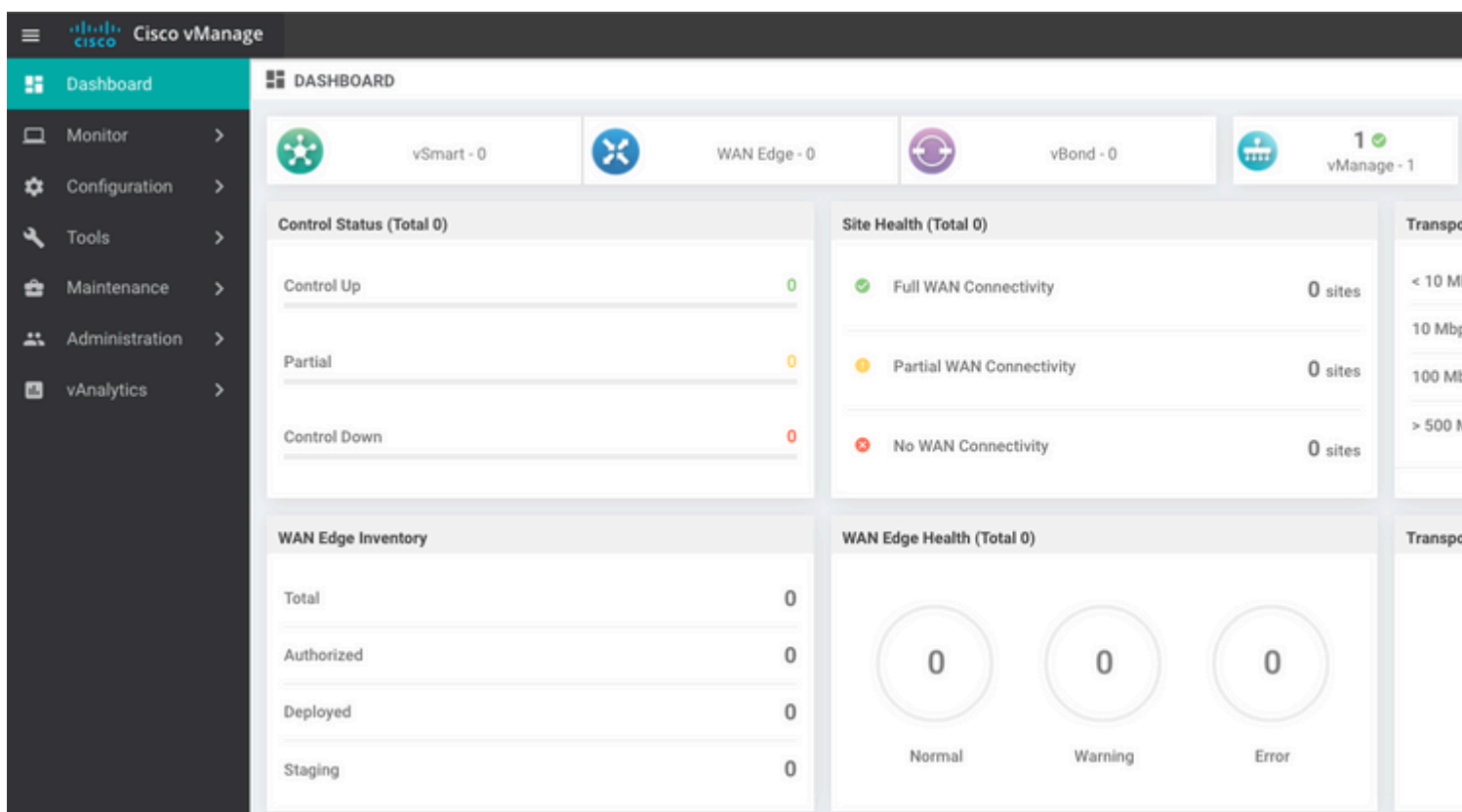


# Herstel vManager

Simuleer een ramp door de vManager opnieuw in te stellen met de opdracht:

```
vManage_rcdn01# request software reset
```

Nu u een frisse vManager hebt die eruitziet als degene die wordt getoond, is het raadzaam om het herstelproces in de juiste volgorde aan te houden voordat u de back-up herstelt.



## Stap 1. Minimale configuratie op vManager

```
system
 host-name          vManage_rcdn01
 system-ip          xx.xx.xx.xx
 site-id            100
 organization-name  ****.cisco
 vbond vbond.list
 !
 !
 vpn 0
 host vbond.list ip 10.2.3.4 10.2.3.5
 interface eth0
 ip address 10.1.3.8/24
 tunnel-interface
 no shutdown
```

```
!  
ip route 0.0.0.0/0 10.1.3.1  
!  
vpn 512  
interface eth1  
ip address 10.11.3.8/24  
no shutdown  
!  
ip route 0.0.0.0/0 10.1.3.1  
!
```

## Stap 2. Back-upconfiguratie en basiscertificaat kopiëren

<#root>

```
vManage_rcdn01:~$ scp am****@xx.xx.xx.xx://home/ftpuser/ftp/am****/05_08_20_configdb.tar.gz .  
am****@xx.xx.xx.xx's password:  
05_08_20_configdb.tar.gz 100% 484KB 76.6MB/s 00:00
```

### Verify

```
vManage_rcdn01:~$ ls -lh  
total 492K  
-rw-r--r-- 1 admin admin 394 May 8 15:20 archive_id_rsa.pub  
-rwxr-xr-x 1 admin admin 485K May 8 15:39 05_08_20_configdb.tar.gz
```

### Copy root certificate from other controller:

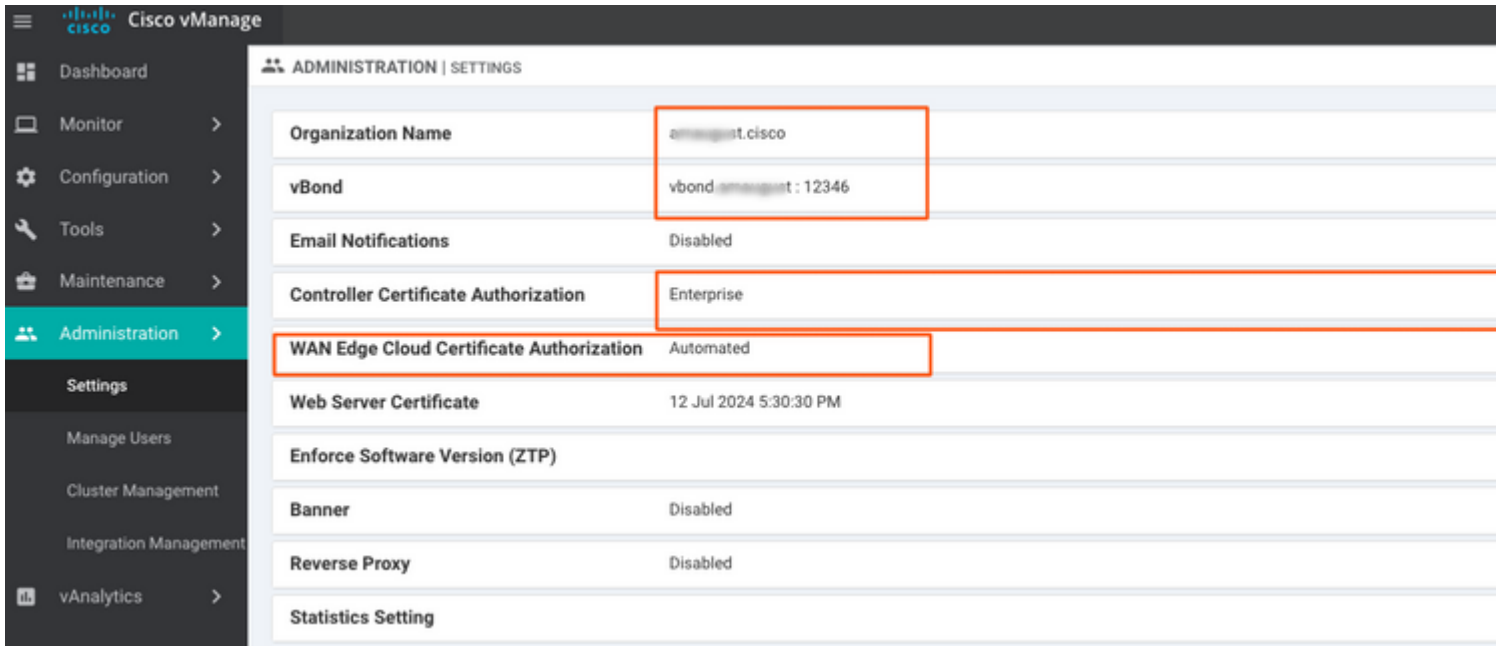
```
vManage_rcdn01:~$ scp admin@vbond://home/admin/root.crt .  
viptela 18.4.4  
admin@vbond's password:  
root.crt 100% 1380 2.8MB/s 00:00
```

## Stap 3. Root-certificaat installeren

```
vManage_rcdn01# request root-cert-chain install /home/admin/root.crt  
Uploading root-ca-cert-chain via VPN 0  
Copying ... /home/admin/root.crt via VPN 0  
Updating the root certificate chain..  
Successfully installed the root certificate chain
```

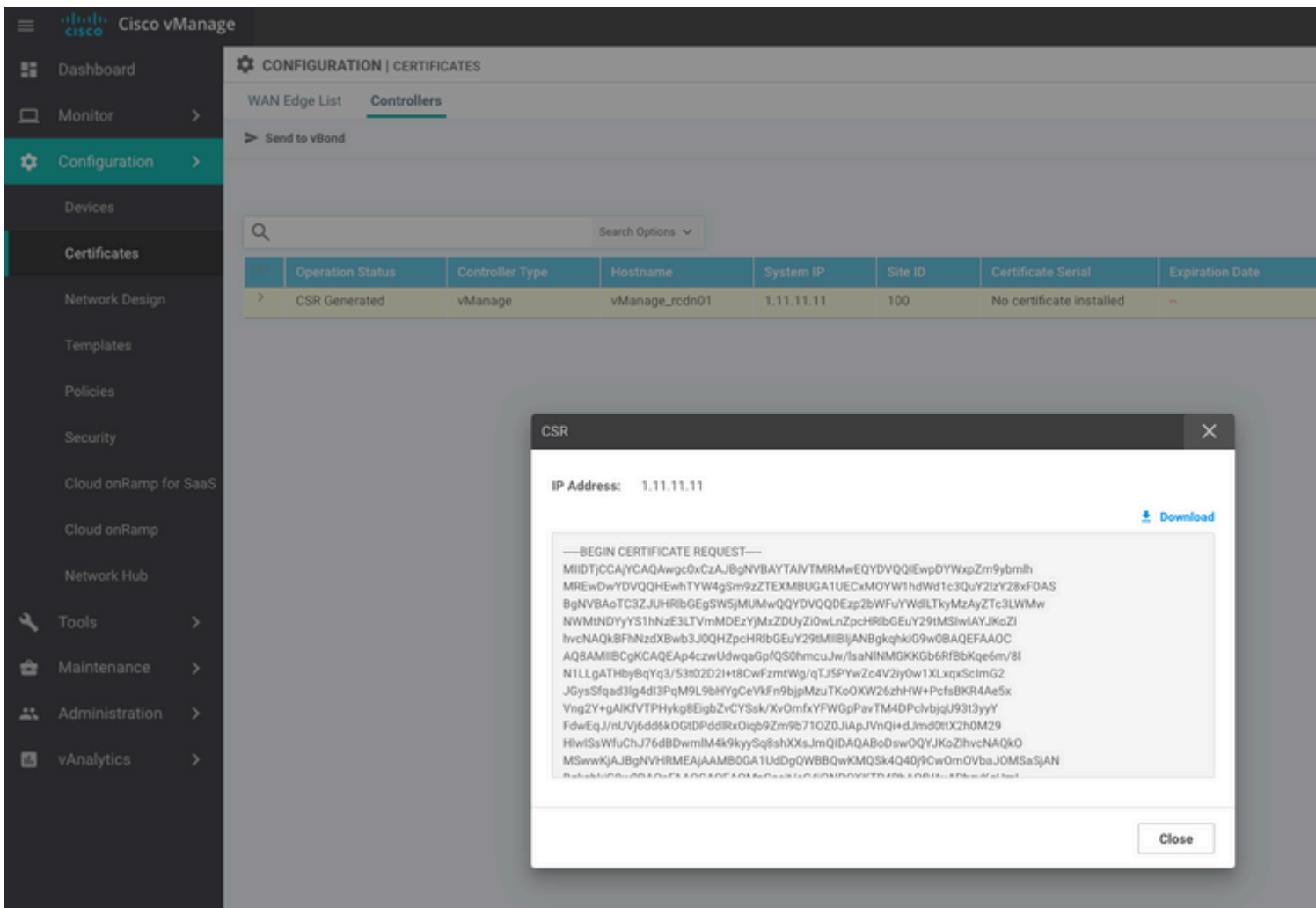
## Stap 4. Basisinformatie bijwerken

Naar navigeren Administration > Settings en configureer de basisinformatie voor vBond IP, de naam van de organisatie en het certificaat.



## Stap 5. Installeer het vManager-certificaat

Gebruik de root.crt dat is geïnstalleerd in stap 2.



**Cisco vManage**

- Dashboard
- Monitor
- Configuration**
- Devices
- Certificates**
- Network Design
- Templates
- Policies
- Security
- Cloud onRamp for SaaS
- Cloud onRamp
- Network Hub
- Tools
- Maintenance
- Administration
- vAnalytics

**CONFIGURATION | CERTIFICATES**

WAN Edge List    **Controllers**

Send to vBond

No file chosen

Search Options

Operation Status	Controller Type	Hostname	System IP	Site ID	Certificate Serial	Expiration Date
CSR Generated	vManage	vManage_rcdn01	1.11.11.11	100	No certificate installed	-

**Install Certificate** ✕

Certificate Text Select a file

```

---BEGIN CERTIFICATE---
MIIEQjCCAyqgAwIBAgITwjqFHbasy@wDQYJKoZIhvcNAQELBQAwbDElMAkGA1UE
BhMCVVMxMzA1BgNVBAGTAIRYMQ0wCwYDVQQHEwRSQ0R0MRowFQYDVQQKEw5hbWF1
Z3Z3ZC5jaXNjbzEXMBUGA1UECxA0Y1W1hdWd1c3QyY2IzY28xMzA1MDg4NjE0
b3RDQTAeFw0yMDA1MDg4NjE0MDg4NjE0MDg4NjE0MDg4NjE0MDg4NjE0MDg4
EwJVUzETMBEGA1UECBMKQ2FsaWZvcmluZS55TERMA8GA1UEBxMIU2FuZlEpc2Ux
BgNVBAsTDmFYXVndXN0LmNpc2NvMRQwEgYDVQQKEw12SVB0ZWxhIEUyZDMEEG
A1UEAxM6dm1hbmFnZS05MjMmMmU3Ny1jMDVjLTQ2MmE1YTcxNy01ZjA1MzIz
MmY1MmY1MmY1MmY1MmY1MmY1MmY1MmY1MmY1MmY1MmY1MmY1MmY1MmY1MmY1
LmNvbTCCASiwDQYJKoZIhvcNAQEBBQADggEPADCCAQoCggEBBAKeHM8FhKmbqXOE
iZnLicP5bGjZTTBihm+kXwWygupv/JTdsy4AEx28gamKl/+d7dNg9PrfAsBc
5rVoP6kyeT2MGX0FdotMNVyBasUncJhIRarEn6mnd5Y0H5Nz6jPS/Wx2AnIZB
Z/W46TM7kyqD11tus4R1vj3H7ASkeAHucVZ4NmPoAJSh1Uzx9pIPBioG2bwmErJP
17zpn8WBVhqt2r0z0Az3Jb246IPd7d8sm8XcBkif51FY+nXepDhrQz3XZUcTogm/

```

Install
Cancel

**Cisco vManage**

- Dashboard
- Monitor
- Configuration**
- Devices
- Certificates
- Network Design
- Templates
- Policies
- Security
- Cloud onRamp for SaaS
- Cloud onRamp
- Network Hub
- Tools
- Maintenance
- Administration

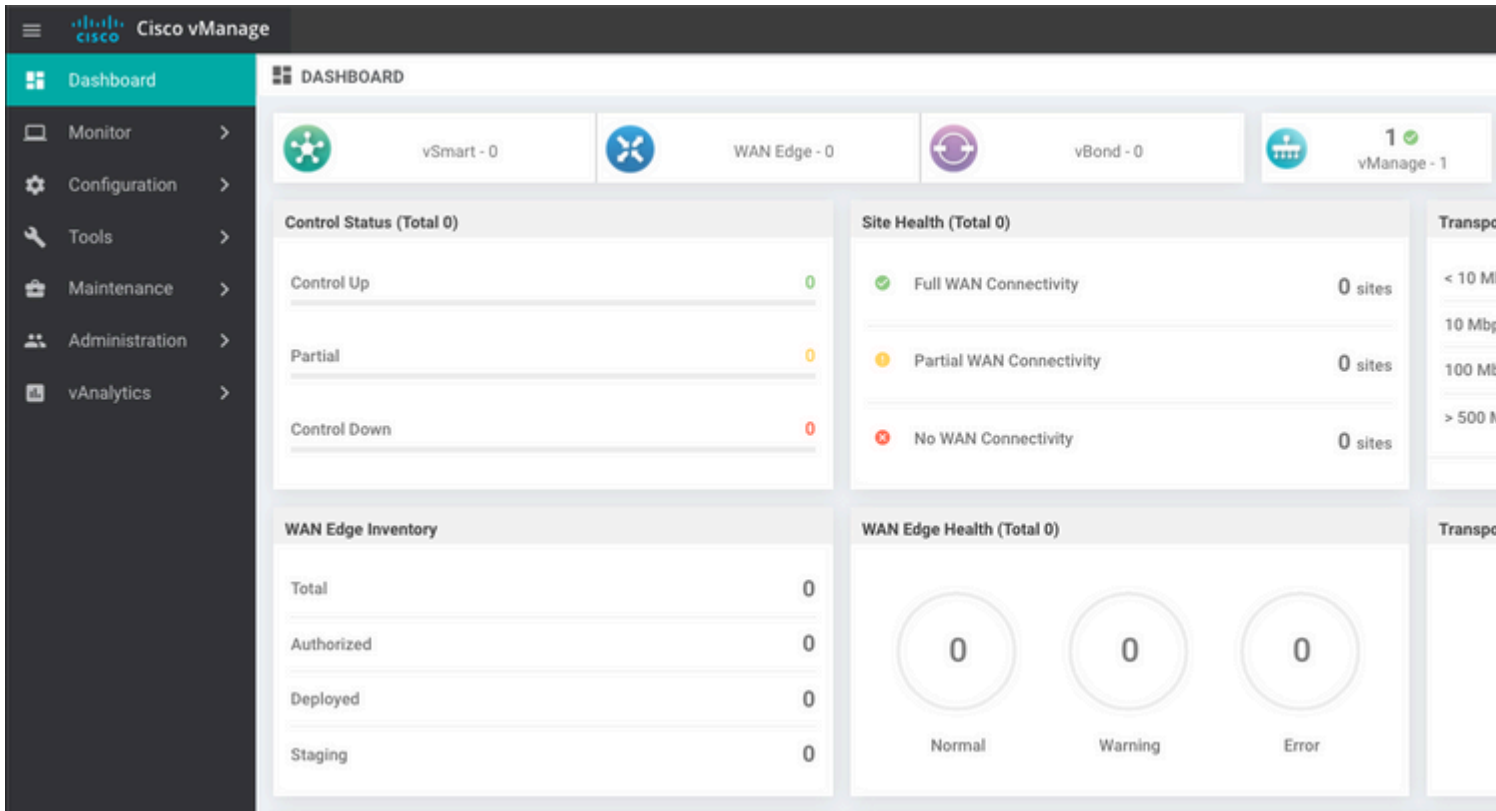
**TASK VIEW**

**Install Certificate**

Total Task: 1 | Success: 1

Search Options

Status	Message	Device Type	Device IP
Success	Successfully synced vEdge list on vManage-9...	vManage	92302e77-c05c-462a-a717-5f013b31d52f
[8-May-2020 16:15:06 UTC]	Install Certificate, on device 92302e77-c05c-462a-a717-5f013b31d52f, started by user "admin" from IP address "169.		
[8-May-2020 16:15:06 UTC]	Pushing serial list to vManage-92302e77-c05c-462a-a717-5f013b31d52f (vManage_rcdn01)		
[8-May-2020 16:15:06 UTC]	Started processing serial list file on vManage-92302e77-c05c-462a-a717-5f013b31d52f (vManage_rcdn01)		
[8-May-2020 16:15:07 UTC]	Completed processing serial list file on vManage-92302e77-c05c-462a-a717-5f013b31d52f (vManage_rcdn01)		
[8-May-2020 16:15:07 UTC]	Done - Push vSmart List for vManage-92302e77-c05c-462a-a717-5f013b31d52f (vManage_rcdn01)		
[8-May-2020 16:15:07 UTC]	Pushed serial list to vManage-92302e77-c05c-462a-a717-5f013b31d52f (vManage_rcdn01)		
[8-May-2020 16:15:07 UTC]	Updated controllers with new certificate serial number of vManage-92302e77-c05c-462a-a717-5f013b31d52f		



## Stap 6. De database terugzetten

<#root>

```
vManage_rcdn01# request nms configuration-db restore path /home/admin/05_08_20_configdb.tar.gz
```

```
Configuration database is running in a standalone mode
0 [main] INFO com.viptela.vmanage.server.deployment.cluster.ClusterConfigurationFileHandler - Trying to
4 [main] INFO com.viptela.vmanage.server.deployment.cluster.ClusterConfigurationFileHandler - Working o
Successfully saved cluster configuration for localhost
Starting DB backup from: localhost
Creating directory: local
cmd to backup db: sh /usr/bin/vconfd_script_nms_neo4jwrapper.sh backup localhost /opt/data/backup/local
Finished DB backup from: localhost
Stopping NMS application server on localhost
Stopping NMS configuration database on localhost
Resetting NMS configuration database on localhost
Restoring from DB backup: /opt/data/backup/staging/graph.db-backup
cmd to restore db: sh /usr/bin/vconfd_script_nms_neo4jwrapper.sh restore /opt/data/backup/staging/graph
Successfully restored DB backup: /opt/data/backup/staging/graph.db-backup
Starting NMS configuration database on localhost
Waiting for 10s before starting other instances...
Polling neo4j at: localhost
NMS configuration database on localhost has started.
Updating DB with the saved cluster configuration data
Successfully reinserted cluster meta information
Starting NMS application-server on localhost
Waiting for 120s for the instance to start...
Removed old database directory: /opt/data/backup/local/graph.db-backup
Successfully restored database
```

Deze stap vergt meer tijd en is afhankelijk van de back-up.

U kunt het proces verifiëren door `tail` de logbestanden op vShell.

```
<#root>
```

```
vManage_rcdn01:~$
```

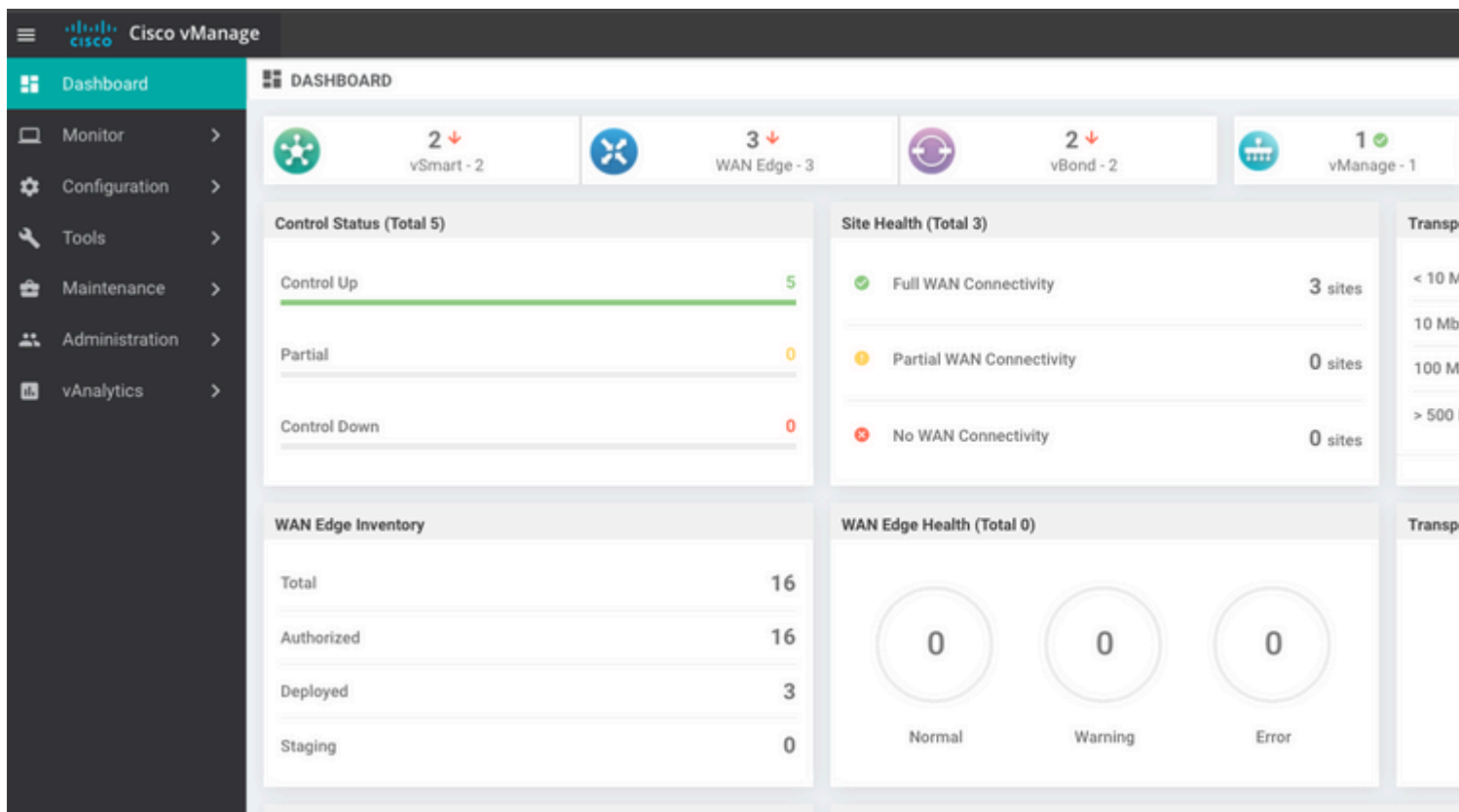
```
tail -fq /var/log/nms/vmanage-server.log /var/log/nms/neo4j-out.log
```

## Stap 7. Services controleren

```
vManage_rcdn01# request nms all status
```

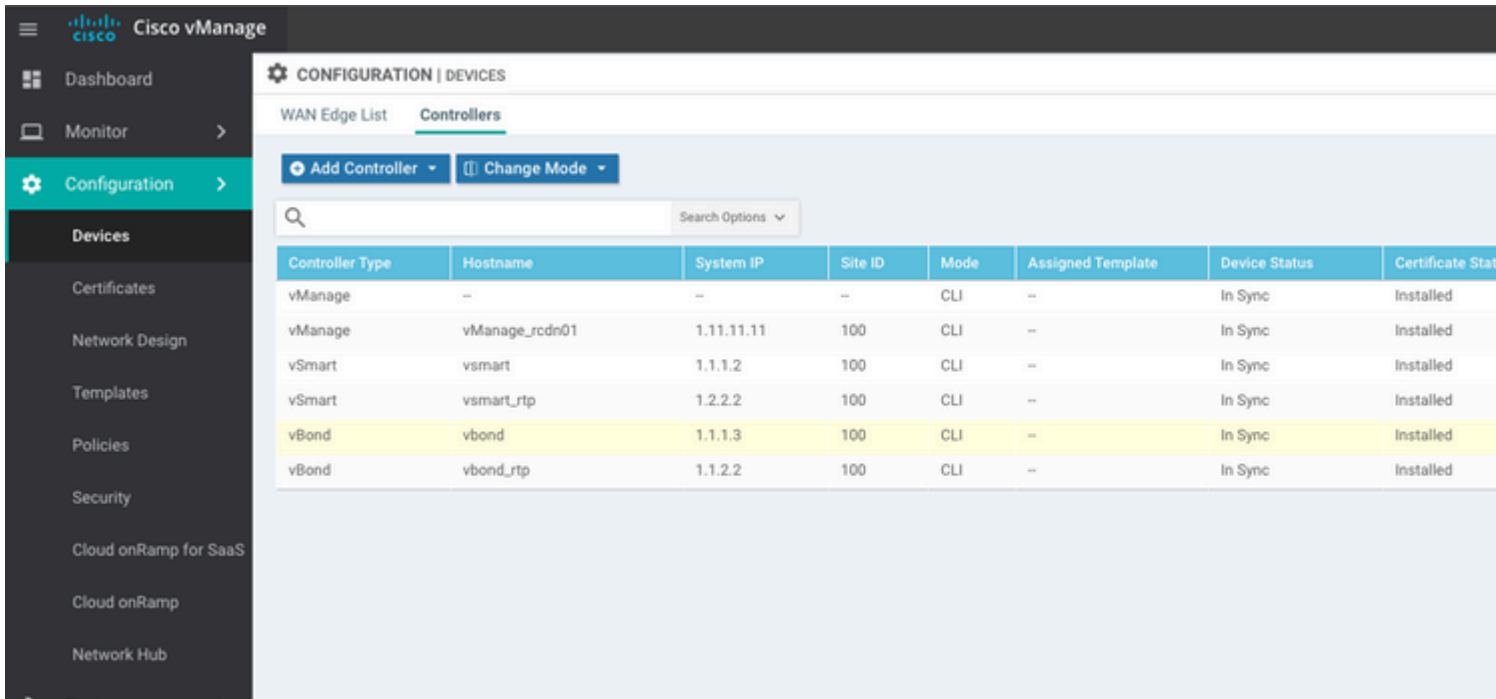
## Stap 8. Controllers opnieuw verifiëren

Op dit moment kunt u zien dat alle beleid, sjablonen en configuraties zijn geladen op vManager, maar alle controllers zijn uitgeschakeld.

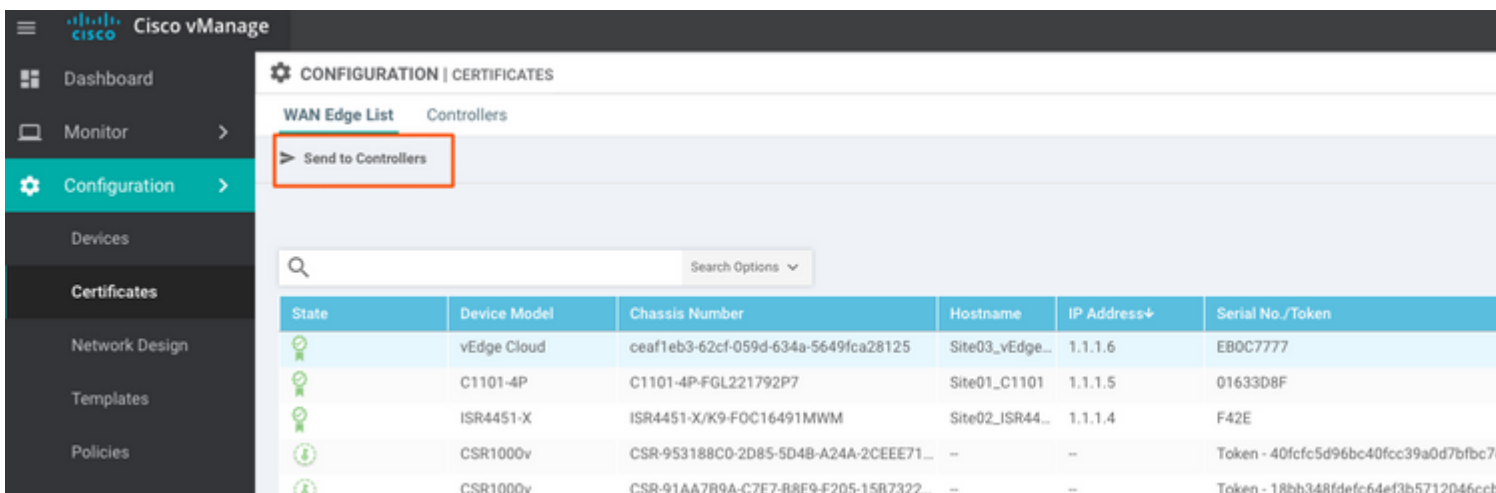
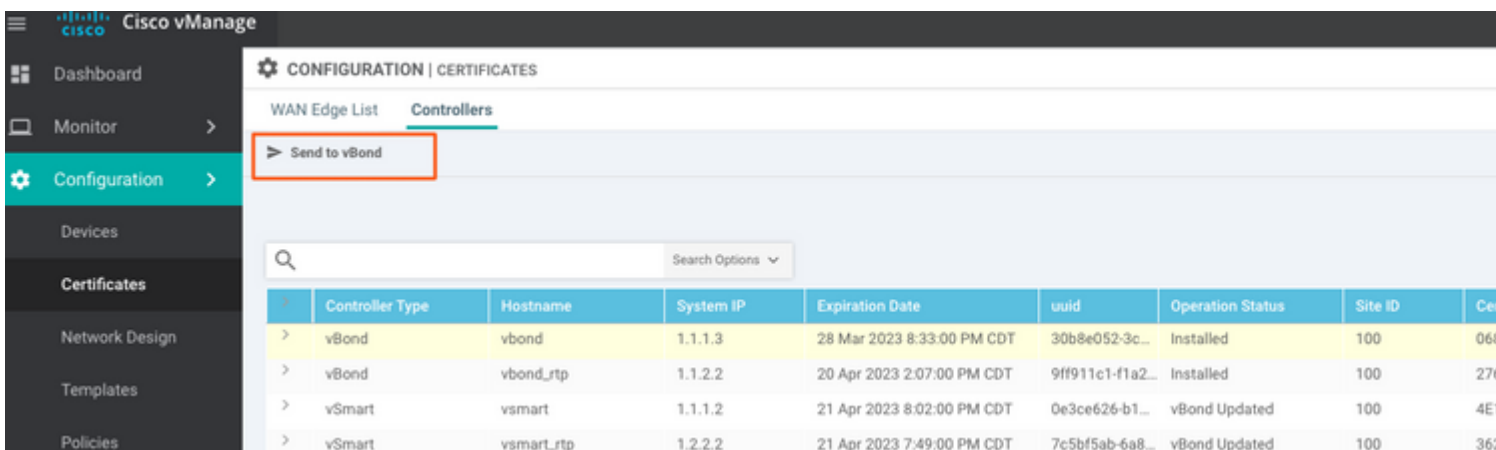


Je moet alle controllers opnieuw authenticeren.

Naar navigeren `Configuration > Devices`. Bewerk elke controller en vul het IP-adres in (beheer IP kan worden gevonden in de lokale configuratie) gebruikersnaam en wachtwoord.



## Stap 9. Verzend updates naar controllers



Nu ziet u dat alle apparaten kunnen worden beheerd door vManager.



**Cisco vManage**

**DASHBOARD**

2 ↑ vSmart - 2    3 ↑ WAN Edge - 3    2 ↑ vBond - 2    1 vManage - 1

**Control Status (Total 4)**

Control Up	4
Partial	0
Control Down	0

**Site Health (Total 2)**

Full WAN Connectivity	2 sites
Partial WAN Connectivity	0 sites
No WAN Connectivity	0 sites

**WAN Edge Inventory**

Total	15
Authorized	15
Deployed	3
Staging	0

**WAN Edge Health (Total 2)**

Normal	2
Warning	0
Error	0

**Top Applications**

No data to display

**Application-Aware Routing**

Tunnel Endpoints	Avg. Latency (ms)	Avg. ...
Site02_ISR4451:default-Site03_vEdge_Cloud...	50.5	0.0
Site01_C1101:default-Site02_ISR4451:default	32.167	0.0
Site02_ISR4451:default-Site01_C1101:default	32	0
Site01_C1101:default-Site03_vEdge_Cloud.d...	25.917	0

**Cisco vManage**

**CONFIGURATION | TEMPLATES**

Device    Feature

**Add Template**

Template Type: Non-Default    Search Options

Name	Description	Type	Device Model	Device Templates	Devices Attached
vEdge_VPN_0	Default Transport VPN tem...	WAN Edge VPN	C1111-4PLTEEA C1117-4P...	0	0
Default_AAA	Default AAA template settin...	AAA	C1111-4PLTEEA C1117-4P...	1	1
cEdge_VPN_0	Default Transport VPN tem...	WAN Edge VPN	C1111-4PLTEEA C1117-4P...	1	1
vEdge_VPN_512_Interface	VPN 512 interface config	WAN Edge Interface	C1111-4PLTEEA C1117-4P...	0	0
vEdge_VPN_0_Interface	VPN 0 interface config	WAN Edge Interface	C1111-4PLTEEA C1117-4P...	0	0
Default_Banner	Banner for amaugust.cisco	Banner	ISR4451-X C1101-4P vEd...	1	1
vEdge_VPN_512	VPN 512 add default route	WAN Edge VPN	C1111-4PLTEEA C1117-4P...	0	0
cEdge_VPN_0_Interface	VPN 0 interface config	WAN Edge Interface	C1111-4PLTEEA C1117-4P...	1	1
cEdge_VPN_512	VPN 512 add default route	WAN Edge VPN	C1111-4PLTEEA C1117-4P...	1	1
cEdge_VPN_512_Interface	VPN 512 interface config	WAN Edge Interface	C1111-4PLTEEA C1117-4P...	1	1

## Over deze vertaling

Cisco heeft dit document vertaald via een combinatie van machine- en menselijke technologie om onze gebruikers wereldwijd ondersteuningscontent te bieden in hun eigen taal. Houd er rekening mee dat zelfs de beste machinevertaling niet net zo nauwkeurig is als die van een professionele vertaler. Cisco Systems, Inc. is niet aansprakelijk voor de nauwkeurigheid van deze vertalingen en raadt aan altijd het oorspronkelijke Engelstalige document ([link](#)) te raadplegen.