

# 일부 Cisco RAID 컨트롤러에서 FW를 업그레이드/다운그레이드한 후 VMWare 데이터 저장소 복구

## 목차

[관련 Cisco 지원 커뮤니티 토론](#)

### Cisco RAID FW / VMWare

Cisco RAID (FW) VMWare .

Cisco / .

:

UCSC-C3160, UCSC-C220-M4s, UCSC-C220-M4L, UCSC-C240-M4S, UCSC-C240-M4SX, UCSC-C240-M4S, UCSC 240-M4L, UCSC-C22-M3S, UCSC-C22-M3L, UCSC-C24-M3S, UCSC-C24-M3S2, UCSC-C24-M3L, UCSC-C460-M4

:

UCS-RAID-9266-8i, UCS-RAID-9266CV-8i, UCS-RAID-9271-8i, UCS-RAID-9271CV-8i, UCS-RAID-9285CV-96RAID-928i CV-8E, UCSC-MRAID-12G, UCSC-MRAID12G-512, UCSC-MRAID12G-1GB, UCSC-MRAID12G-2GB, UCSC-MRAID12G-4GB, UCSC-SAS030322222G,-8E, UCSC-C3X60-R4GB, UCSC-C3X60-HBA, UCSC-C3X60-R1GB

:

2.0(4) 2.0(3) . (2.0(3) 2.0(6f) ) .

: C220/C240 M3 9271CV-8i/9271-8i RAID .

/: FW / VMWare . VMWare . VSphere .

### Configuration Issues

No datastores have been configured  
 No core dump target has been configured. Host core dumps cannot be saved.

General	
Manufacturer:	Cisco Systems Inc
Model:	UCSC-C220-M3S
CPU Cores:	16 CPUs x 1.999 GHz
Processor Type:	Intel(R) Xeon(R) CPU E5-2650 0 @ 2.00GHz
License:	VMware vSphere 5 Enterprise Plus - Licensed for 2 physic...
Processor Sockets:	2
Cores per Socket:	8
Logical Processors:	32
Hyperthreading:	Active
Number of NICs:	4
State:	Connected
Virtual Machines and Templates:	0
vMotion Enabled:	No
VMware EVC Mode:	Disabled
vSphere HA State	N/A
Host Configured for FT:	No
Active Tasks:	
Host Profile:	
Image Profile:	ESXi-5.5.0-2068190-custom...
Profile Compliance:	N/A
DirectPath I/O:	Supported

Resources	
CPU usage: <b>45 MHz</b>	Capacity 16 x 1.999 GHz
Memory usage: <b>2410.00 MB</b>	Capacity 98267.98 MB
Storage	
Network	
VM Network	Standard port group

Fault Tolerance	
Fault Tolerance Version:	5.0.0-5.0.0-5.0.0
Total Primary VMs:	--
Powered On Primary VMs:	--
Total Secondary VMs:	--
Powered On Secondary VMs:	--

/var/log/vmkernal.log

```

2015-09-30T19:15:55.813Z cpu22:33374)VM: 8389: Device naa.600605b006b497b0ff000020021141d1:3 detected to be a snapshot:
2015-09-30T19:15:55.840Z cpu22:33374)VM: 8396: queried disk ID: <type 2, len 22, lun 0, devType 0, scsi 0, h(id) 501754826480
8749311>
2015-09-30T19:15:55.840Z cpu22:33374)VM: 8403: on-disk disk ID: <type 2, len 22, lun 0, devType 0, scsi 0, h(id) 108724824995
87305860>
    
```

:

VMWare . <http://kb.vmware.com/kb/1011387>

vSphere , webUI CLI .

### ESXi 5.x vSphere

1. vSphere Client .
2. .

**The ESXi host does not have persistent storage.**

To run virtual machines, create at least one datastore for maintaining virtual machines and other system files.

Note: If you plan to use iSCSI or a network file system (NFS), ensure that your storage adapters and network connections are properly configured before continuing.

To add storage now, [click here to create a datastore...](#)

**Hardware**

- Processors
- Memory
- Storage
- Networking
- Storage Adapters
- Network Adapters
- Advanced Settings
- Power Management

**Software**

- Licensed Features
- Time Configuration
- DNS and Routing
- Authentication Services
- Power Management
- Virtual Machine Startup/Shutdown
- Virtual Machine Swapfile Location
- Security Profile
- Host Cache Configuration
- System Resource Allocation
- Agent VM Settings
- Advanced Settings

**View:** Datastores Devices

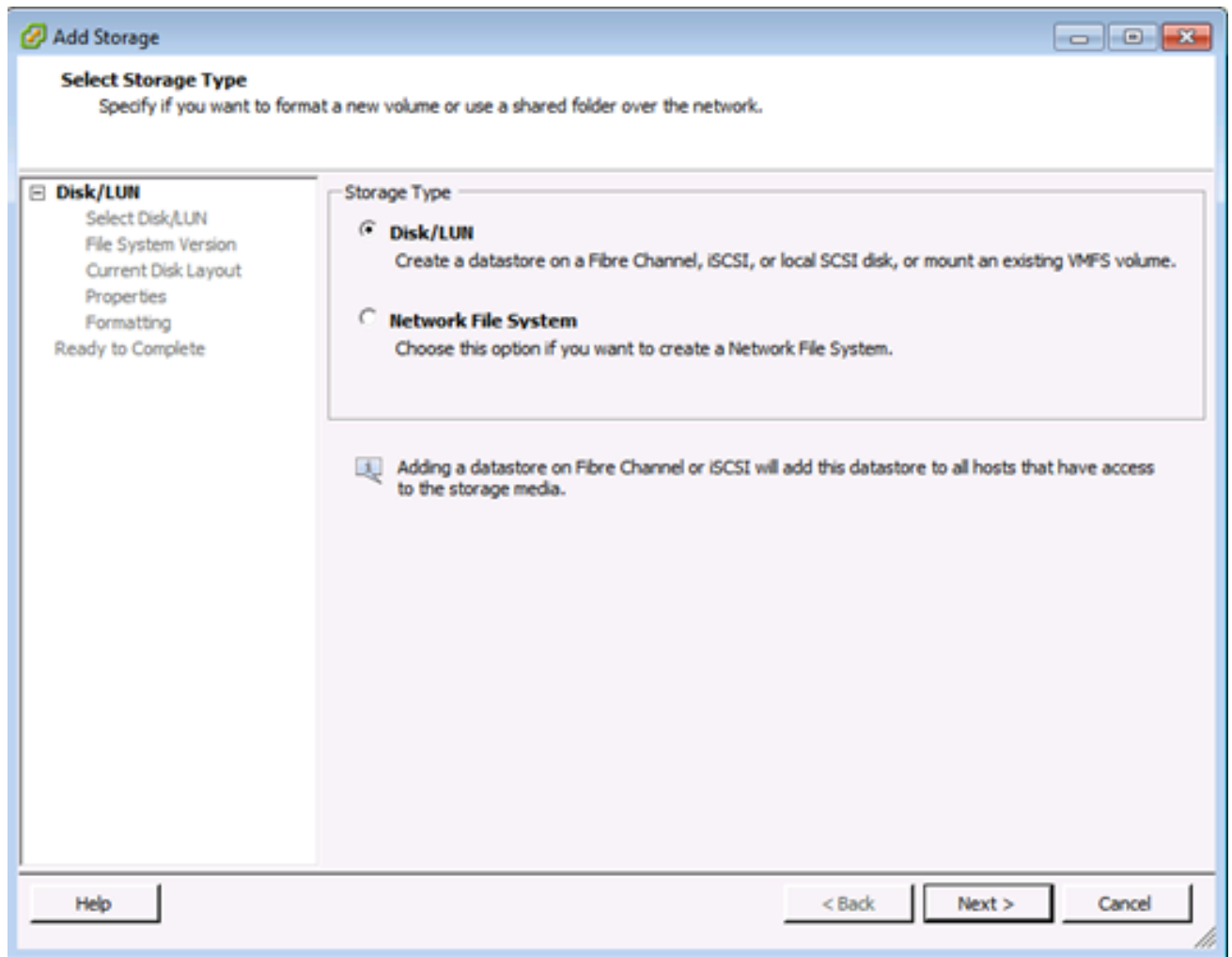
**Datastores**

Identification	Status	Device	Drive Type	Capacity	Free	Type	Last Update

**Datastore Details**

3. .

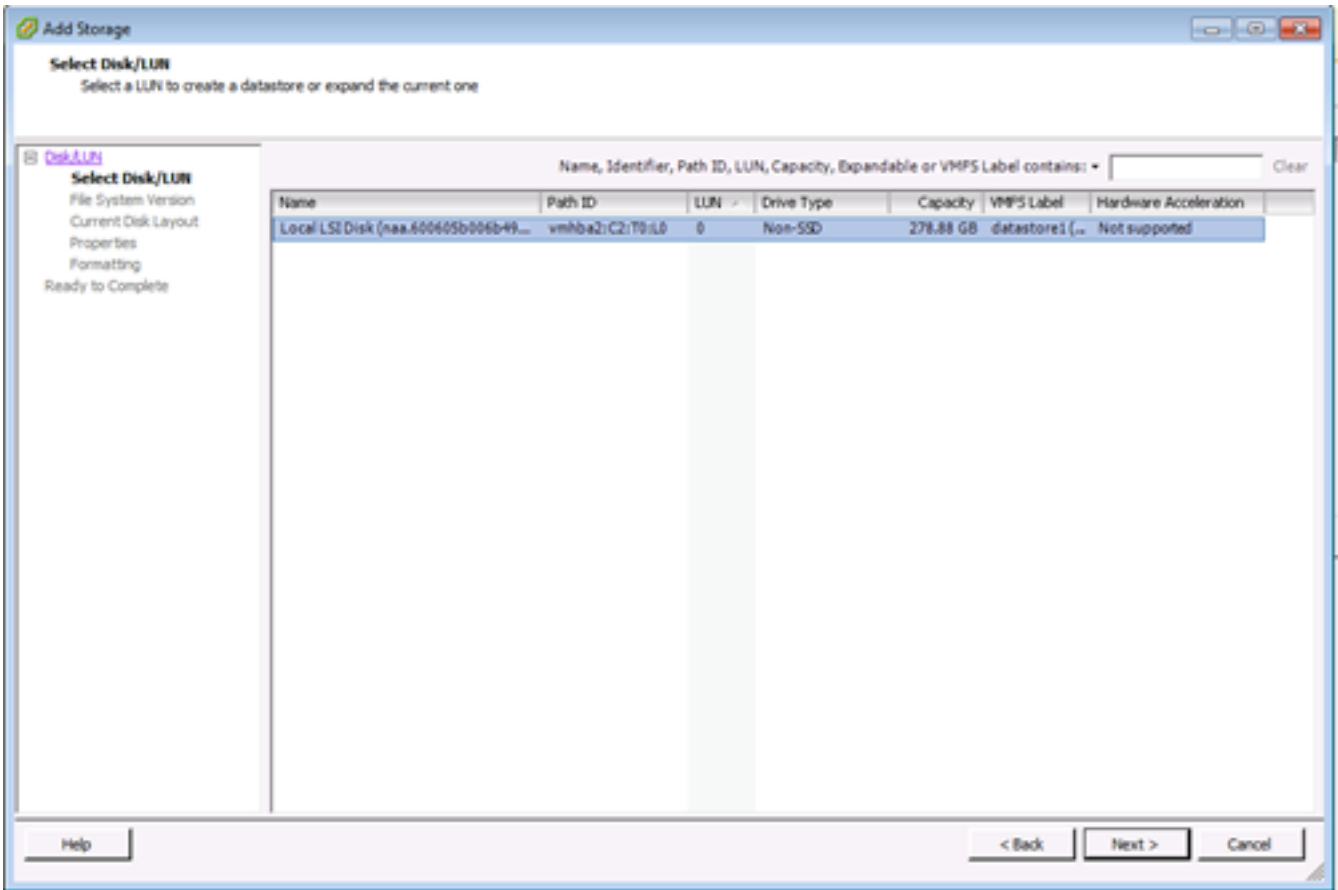
4. /LUN .



5. Next() .

6. LUN VMFS Label LUN .

:VMFS LUN VMFS .



7. Next() .

8. .

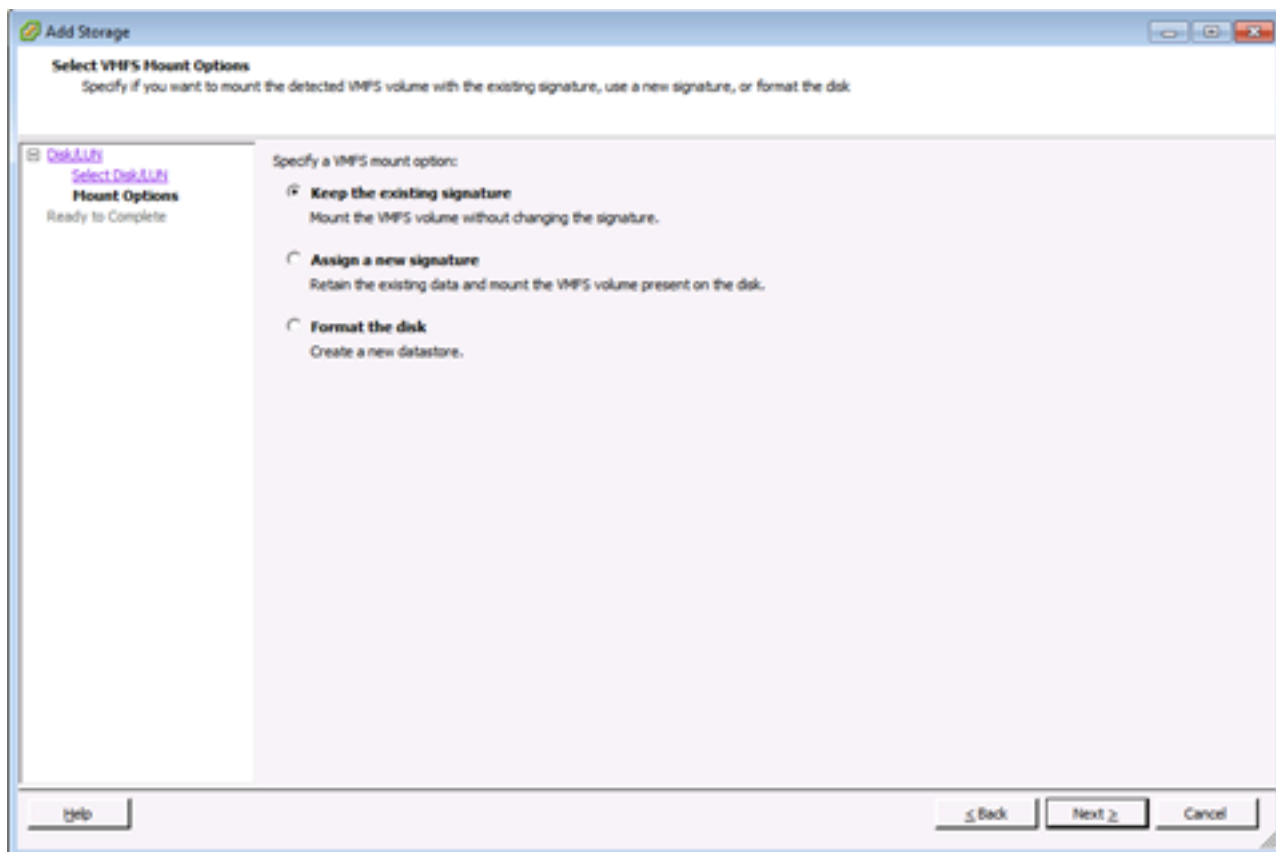
a. :LUN (: LUN )

b. :LUN

c. :LUN

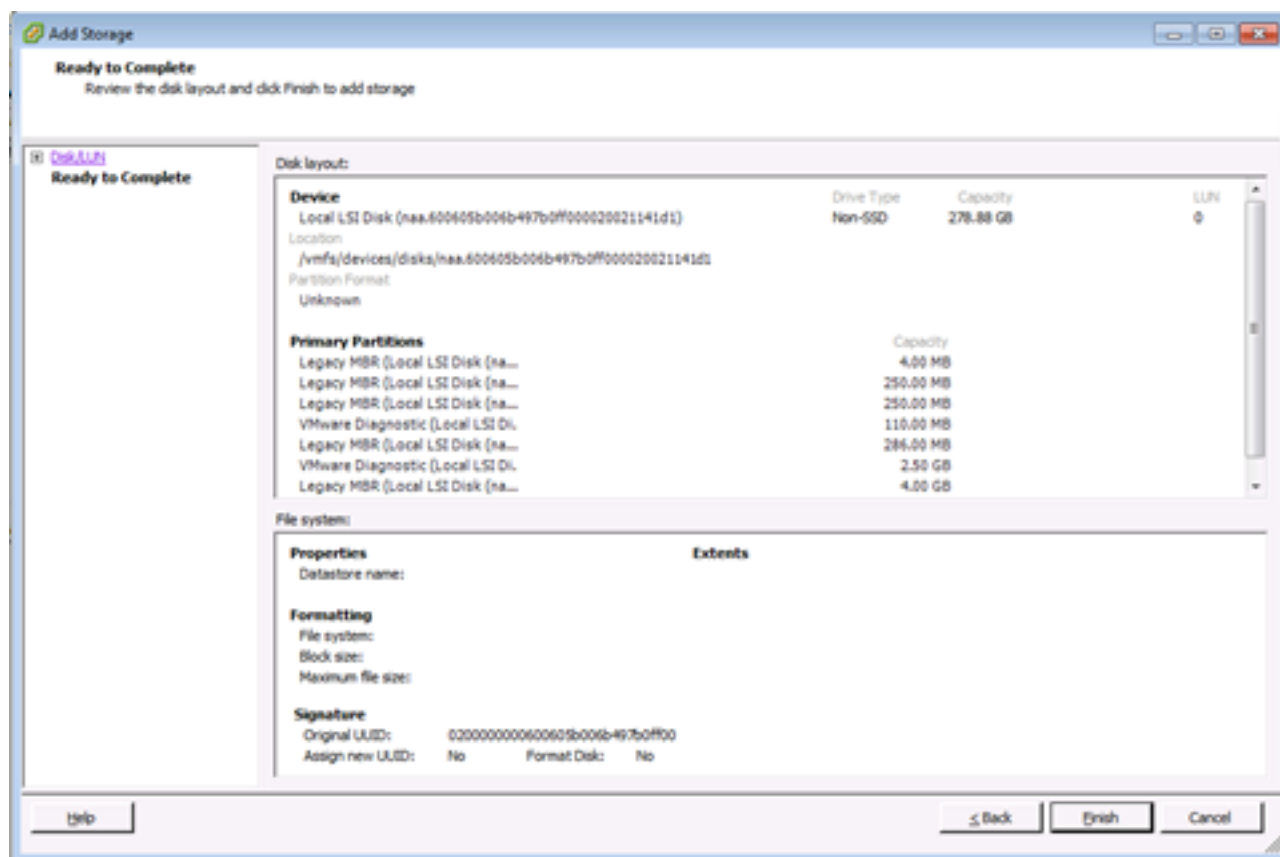
:

LUN . VMFS . vCenter Server .



9 . . .

10. Ready to Complete . . .



11 . . .