

Understand Unified Wireless Network Protocol (CUWN WLC) and Port Matrix

Contents

[Introduction](#)

[Background Information](#)

[Terms Used](#)

[Network Overview](#)

[Protocol and Port Number Information](#)

[Table 1. WCS/NCS/PI Protocols and Ports](#)

[Table 2. MSE - AwIPS Protocols](#)

[Table 3. MSE - Context Protocols](#)

[Table 4. WLC Protocols](#)

[Table 5. AP Protocols](#)

[Table 6. OEAP600 Firewall Protocols](#)

Introduction

This document describes information about port numbers used by the Unified Wireless solution.

Background Information

The main purpose of this document is to provide a consolidated source of communication protocols that incorporate a CUWN solution. Goals are to implement appropriate firewall and security policies based on this information to properly secure the CUWN infrastructure.

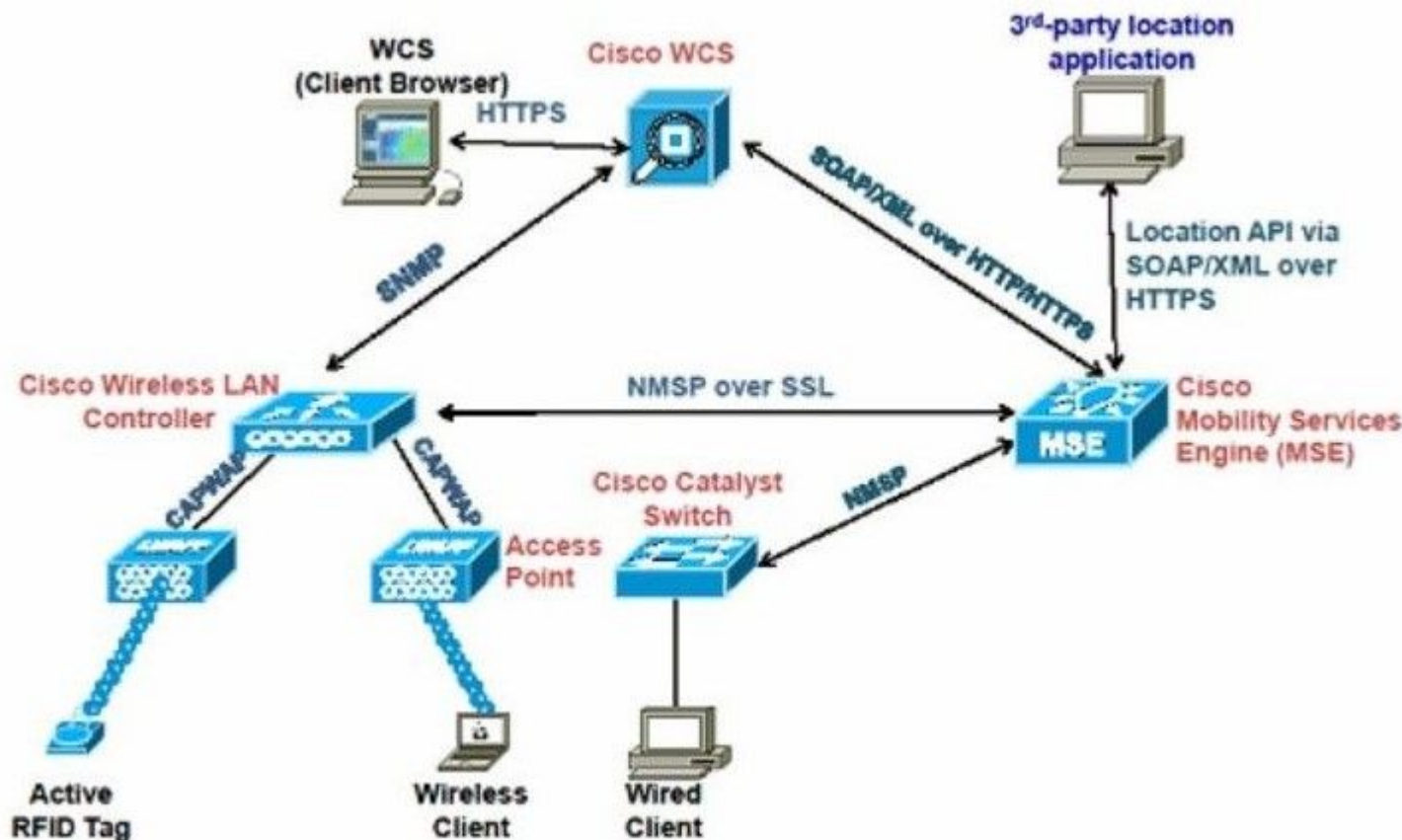
Terms Used

Here is a list of terms used in this document:

- Wireless Control System - WCS
- Network Control System - NCS
- Cisco Prime Infrastructure - PI
- Wireless LAN Controller - WLC
- Mobility Services Engine - MSE
- Operating System - OS
- Access Point - AP
- Secure Shell - SSH
- Simple Mail Transfer Protocol - SMTP
- Authentication, Authorization, and Accounting - AAA
- Domain Name System - DNS
- Identity Services Engine - ISE
- Network Time Protocol - NTP
- Simple Object Access Protocol - SOAP
- High Availability - HA
- Quality of Service - QoS
- Database - DB
- Remote Desktop Protocol - RDP

- Virtual Network Computing - VNC
- Transport Layer Security - TLS
- Cisco Location Control Protocol - LOCP
- Internet Control Message Protocol - ICMP
- Simple Network Management Protocol - SNMP
- Network Mobility Services Protocol - NMSP
- Adaptive Wireless Intrusion Prevention System - AwIPS
- Ethernet over IP - EoIP
- Rogue Location Discovery Protocol - RDLP
- Control and Provisioning of Wireless Access Points - CAPWAP
- Light Weight Access Point Protocol - LWAPP
- Network Spectrum Interface - NSI
- OfficeExtend Access Point - OEAP

Network Overview



Network Diagram

Protocol and Port Number Information

Here is a list of tables in this document:

- [Table 1. WCS/NCS/PI Protocols](#)
- [Table 2. MSE AwIPS Protocols](#)
- [Table 3. MSE Context Protocols](#)
- [Table 4. WLC Protocols](#)
- [Table 5. CAPWAP AP Protocols](#)
- [Table 6. OEAP600 Firewall Protocols](#)

Table 1. WCS/NCS/PI Protocols and Ports

| WCS/NCS/PI Protocols | | | | |
|----------------------|--------------------|----------|------------------|------------------------------|
| Source Device | Destination Device | Protocol | Destination Port | Description |
| WCS/NCS/PI | WLC and MSE | TCP | 21 | FTP - Used to transfer files |

| | | | | |
|-----------------------------|--------------------------|---------|------|--|
| | | | | to/from devices |
| Various Management Stations | WCS Host Server OS-Linux | TCP | 22 | SSH - Used for remote Linux Host Access |
| WCS/NCS/PI | Cisco aIOS® AP | TCP | 23 | Telnet - Used for Cisco aIOS AP Configuration |
| WCS/NCS/PI | SMTP mail servers | TCP | 25 | SMTP - used for fault notifications |
| AAA Servers/ISE | WCS/NCS/PI | TCP/UDP | 49 | TACACS+ |
| WCS/NCS/PI | aIOS AP | UDP | 53 | DNS - used for Cisco aIOS AP Configuration |
| WLC | WCS/NCS/PI | UDP | 69 | TFTP - Used to transfer files to/from devices |
| Various Management Stations | WCS/NCS/PI | TCP | 80 | HTTP (Configurable at install time) |
| NTP Server | WLC | UDP | 123 | NTP |
| WLC and MSE | WCS/NCS/PI | UDP | 161 | SNMP discovery, inventory Cisco aIOS AP and others |
| WLC and MSE | WCS/NCS/PI | UDP | 162 | SNMP Trap Receiver |
| Various Management Stations | WCS/NCS/PI | TCP | 443 | HTTPS (Configurable at install time) |
| MSE | WCS/NCS/PI | TCP | 443 | SOAP/XML (SOAP used for MSE Management) |
| WLC | WCS/NCS/PI | UDP | 514 | Syslog (Optional) |
| Local only | WCS/NCS/PI | TCP | 1299 | RMI Registry port (local |

| | | | | |
|------------------------------|--|---------|-----------|--|
| | | | | only) |
| HA Server and Various others | WCS/NCS/PI | TCP | 1315 | Database Server HA (QoS) |
| WCS HA Server | WCS/NCS/PI | TCP | 1316-1320 | HA DB Ports |
| AAA Servers/ISE | WCS/NCS/PI | UDP | 1812/1645 | RADIUS |
| AAA Servers/ISE | WCS/NCS/PI | UDP | 1813/1646 | RADIUS |
| Various Management Stations | WCS Host Server OS-Microsoft Windows | TCP/UDP | 3389 | RDP - Microsoft Windows Remote Desktop (Optional) |
| Various | WCS/NCS/PI | TCP | 5001 | Apache Axis SOAP Monitoring: Java Listener |
| Various Management Stations | WCS Host Server OS-Microsoft Windows | TCP | 5500 | VNC - (Optional) Used for remote Microsoft Windows Host Access |
| Various Management Stations | WCS Host Server OS-Microsoft Windows | TCP | 5800 | VNC - (Optional) Used for remote Microsoft Windows Host Access |
| Various Management Stations | WCS Host Server OS-Microsoft Windows | TCP/UDP | 5900 | VNC - (Optional) Used for remote Microsoft Windows Host Access |
| Local only | WCS/NCS/PI | TCP | 6789 | RMI Server Port (local only) |
| MSE - Location Appliance | WCS/NCS/PI | TCP | 8001 | Location Server Data Sync. Communication Port |
| Local only | WCS/NCS/PI | TCP | 8005 | Tomcat Shutdown Port |
| Local only | WCS/NCS/PI | TCP | 8009 | Web Server/Java Server Connector (local only) |
| HA Web Server | WCS/NCS/PI | TCP | 8082 | HA Web Server Port: Health |

| | | | | |
|-----------------------------|------------|-----------------------------|--------------------------------------|--------------------|
| | | | | Monitor for WCS HA |
| Various Management Stations | WCS/NCS/PI | TCP | 8456 | HTTP Connector |
| Various Management Stations | WCS/NCS/PI | TCP | 8457 | HTTP Redirect |
| Various Management Stations | WCS/NCS/PI | TCP | 16113 | LOCP TLS Port |
| WLC | WCS/NCS/PI | UDP | 29001-29005 | TFTP Child threads |
| Various | AP | ICMP | | ICMP - Optional |
| WLC | CMX 10.2.X | NMSP, AoA, 80, 443, 161,162 | 16113, 2003, HTTP, HTTPS, ICMP, SNMP | |

Table 2. MSE - AwIPS Protocols

| MSE - AwIPS Protocols | | | | |
|------------------------------|---------------------------|-----------------|-------------------------|--|
| Source Device | Destination Device | Protocol | Destination Port | Description |
| WCS/NCS/PI | MSE | TCP | 21 | FTP - Used to transfer files to/from devices |
| Various Management Stations | MSE Host Server OS-Linux | TCP | 22 | SSH - Used for remote Linux Host Access |
| WCS/NCS/PI | MSE | TCP | 80 | HTTP (Configurable at install time) |
| NTP Server | WLC | UDP | 123 | NTP |

| | | | | |
|------------|-------------------------|------|-------|--------------------------------------|
| WCS/NCS/PI | MSE | UDP | 161 | SNMP |
| MSE | WCS/NCS/PI | UDP | 162 | SNMP Trap Receiver |
| WCS/NCS/PI | MSE | TCP | 443 | HTTPS (Configurable at install time) |
| WCS/NCS/PI | MSE | TCP | 443 | SOAP/XML |
| WCS/NCS/PI | MSE | TCP | 8001 | HTTPS (Configurable at install time) |
| WLC | MSE and Spectrum Expert | TCP | 16113 | NMSP |
| Various | AP | ICMP | | ICMP - Optional |

Table 3. MSE - Context Protocols

| MSE - Context-Aware and AwIPS Protocols | | | | |
|--|---------------------------|-----------------|-------------------------|--|
| Source Device | Destination Device | Protocol | Destination Port | Description |
| WCS/NCS/PI | MSE | TCP | 21 | FTP - Used to transfer files to/from devices |
| Various Management Stations | MSE Host Server OS-Linux | TCP | 22 | SSH - Used for remote Linux Host Access |
| WCS/NCS/PI | MSE | TCP | 80 | HTTP (Configurable at install time) |
| NTP Server | WLC | UDP | 123 | NTP |
| WCS/NCS/PI | MSE | UDP | 161 | SNMP |
| MSE | WCS/NCS/PI | UDP | 162 | SNMP Trap Receiver |

| | | | | |
|-------------------------------|-------------------------|------|-------|--------------------------------------|
| WCS/NCS/PI | MSE | TCP | 443 | HTTPS (Configurable at install time) |
| WCS/NCS/PI | MSE | TCP | 443 | SOAP/XML |
| WCS/NCS/PI | MSE | TCP | 8001 | HTTPS (Configurable at install time) |
| WLC and Catalyst LAN Switches | MSE and Spectrum Expert | TCP | 16113 | NMSP |
| Various | AP | ICMP | | ICMP - Optional |

Table 4. WLC Protocols

| WLC Protocols | | | | | |
|-------------------------------------|---------------------------|-----------------|-------------------------|--------------------|--|
| Source Device | Destination Device | Protocol | Destination Port | Source Port | Description |
| WCS/NCS/PI | WLC | TCP | 21 | 0:65535 | FTP - Used to transfer files to/from devices |
| WCS and Various Management Stations | WLC | TCP | 22 | 0:65535 | SSH - Used for remote Management (Optional) |
| WCS and Various Management Stations | WLC | TCP | 23 | 0:65535 | Telnet - Used for remote Management (Optional) |
| AAA Servers/ISE | WLC | TCP/UDP | 49 | 0:65535 | TACACS+ |
| WCS and Various Management Stations | WLC | UDP | 69 | 0:65535 | TFTP - Used to transfer files to/from devices |
| Various Management Stations | WLC | TCP | 80 | 0:65535 | HTTP (Configurable at install time) |
| WLC | WLC | TCP | 91 | 0:65535 | |
| WLC Mobility Group | WLC | EoIP IP | EoIP IP | 0:65535 | EoIP Tunnel - Client |

| | | | | | |
|--|-------------|-------------|-------------|----------|--|
| members | | Protocol 97 | Protocol 97 | | Anchor/Tunneling traffic |
| NTP Server | WLC | UDP | 123 | 0:65535 | NTP |
| WCS/NCS/PI | WLC | UDP | 161 | 161 | SNMP |
| WCS/NCS/PI | WLC | UDP | 162 | 0:65535 | SNMP Trap Receiver |
| Various Management Stations | WLC | TCP | 443 | 0:65535 | HTTPS (Configurable at install time) |
| WLC and Various Syslog Servers | WLC | UDP | 514 | 0:65535 | Syslog (Optional) |
| AAA Servers/ISE | WLC | UDP | 1812/1645 | 0:65535 | RADIUS |
| AAA Servers/ISE | WLC | UDP | 1813/1646 | 0:65535 | RADIUS |
| AP | WLC | UDP | 6352 | 0:65535 | RDLP |
| Various Management Stations (MSE, Spectrum Expert) | WLC | TCP | 16113 | 0:65535 | LOCP TLS Port NMSP |
| WLC | WLC | UDP | 16666 | 16666 | Mobility - non-secured |
| WLC | WLC | UDP | 16667 | | Mobility - secured ** In release. 5.2+ feature was removed |
| AP | WLC | UDP | 5246-5247 | 0:65535 | CAPWAP Ctl/Data |
| AP | WLC | UDP | 5248 | 0:65535 | CAPWAP Mcast. |
| Various | AP | ICMP | | | ICMP - Optional |
| mDNS | WLC/network | UDP | 5353 | 0:65535 | mDNS |
| RADIUS server | WLC | UDP | 1700 | 0::65535 | CoA radius packets |

Table 5. AP Protocols

| AP CAPWAP-LWAPP Protocols | | | | |
|----------------------------------|---------------------------|-----------------|-------------------------------------|---|
| Source Device | Destination Device | Protocol | Destination Port | Description |
| Various | AP | UDP | 69 | TFTP - used for remote code update |
| Various | AP | TCP | 22 | SSH - used for optional remote troubleshooting access. Can be administratively disabled. |
| Various | AP | TCP | 23 | Telnet - used for optional remote troubleshooting access. Can be administratively disabled. |
| AP | DNS Server | TCP/UDP | 53 | DNS |
| AP | DHCP Server | UDP | 68 | DHCP |
| AP | Various | UDP | 514 | Syslog - Destination configurable. The default is 255.255.255.255. |
| WLC | AP | UDP | 1024 - 65535* | CAPWAP Ctl/Data |
| WLC | AP | UDP | 5248 | CAPWAP Mcast. |
| AP | WLC | UDP | 6352 | RDLP |
| AP | Monitor PC | TCP | 37540 for 2.4 GHz 37550 for 5GHz | NSI Protocol for SE-Connect |
| Various | AP | ICMP | | ICMP - Optional |
| AP | AP | UDP | 16670 | Client policies (AVC) |

* - Arbitrary port number is assigned to every AP from the range 1024 - 65535 when the AP joins the WLC. The WLC uses the number as the Destination Port for CAPWAP Ctl/Data as long as the AP is connected.

Table 6. OEAP600 Firewall Protocols

| AP CAPWAP-LWAPP Protocols | | | | |
|----------------------------------|---------------------------|-----------------|-------------------------|--------------------|
| Source Device | Destination Device | Protocol | Destination Port | Description |
| WLC | AP | UDP | 5246-5247 | CAPWAP Ctl/Data |