

Workaround for Slow-down and DNS Problems with RV016, RV042, RV042G and RV082 VPN Routers and Mac OS

Objective

Computers that use Mac OS connected to RV0xx VPN routers may experience a significant slowdown and have problems with DNS resolution if their Internet Service Provider (ISP) does not route IPv6 DNS queries. The solution is to disable IPv6 on Mac OS itself as the Safari and Apple applications do not have a separate process to disable IPv6.

This article explains how to disable IPv6 on Macs connected to RV016, RV042, RV042G and RV082 VPN Routers.

Applicable Devices

- RV016
- RV042
- RV042G
- RV082

Software Version

- v4.2.1.02

Disable IPv6 on Mac

With the Mac Graphical User Interface (GUI)

Step 1. Log in to the web configuration utility and choose **Setup > Network**. The *Network* page opens:

Network

Host Name : (Required by some ISPs)

Domain Name : (Required by some ISPs)

IP Mode

Mode	WAN	LAN
<input checked="" type="radio"/> IPv4 Only	IPv4	IPv4
<input type="radio"/> Dual-Stack IP	IPv4 and IPv6	IPv4 and IPv6

LAN Setting

MAC Address : 54:75:D0:F7:FB:52

Device IP Address :

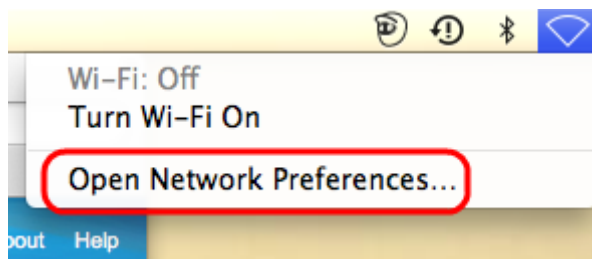
Subnet Mask :

Multiple Subnet : Enable

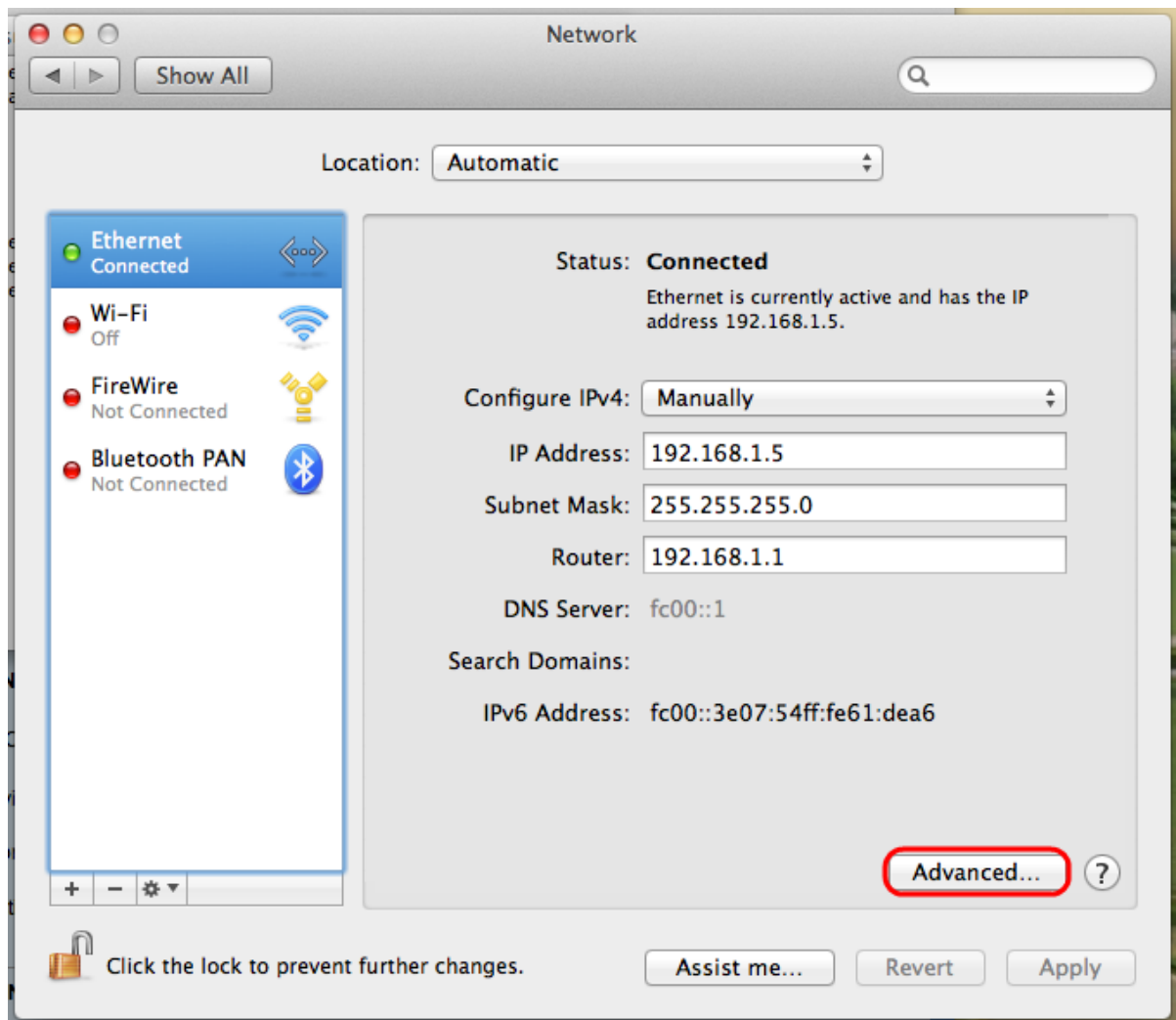
WAN Setting

Step 2. Click the **IPv4 Only** radio button to disable IPv6 on the router.

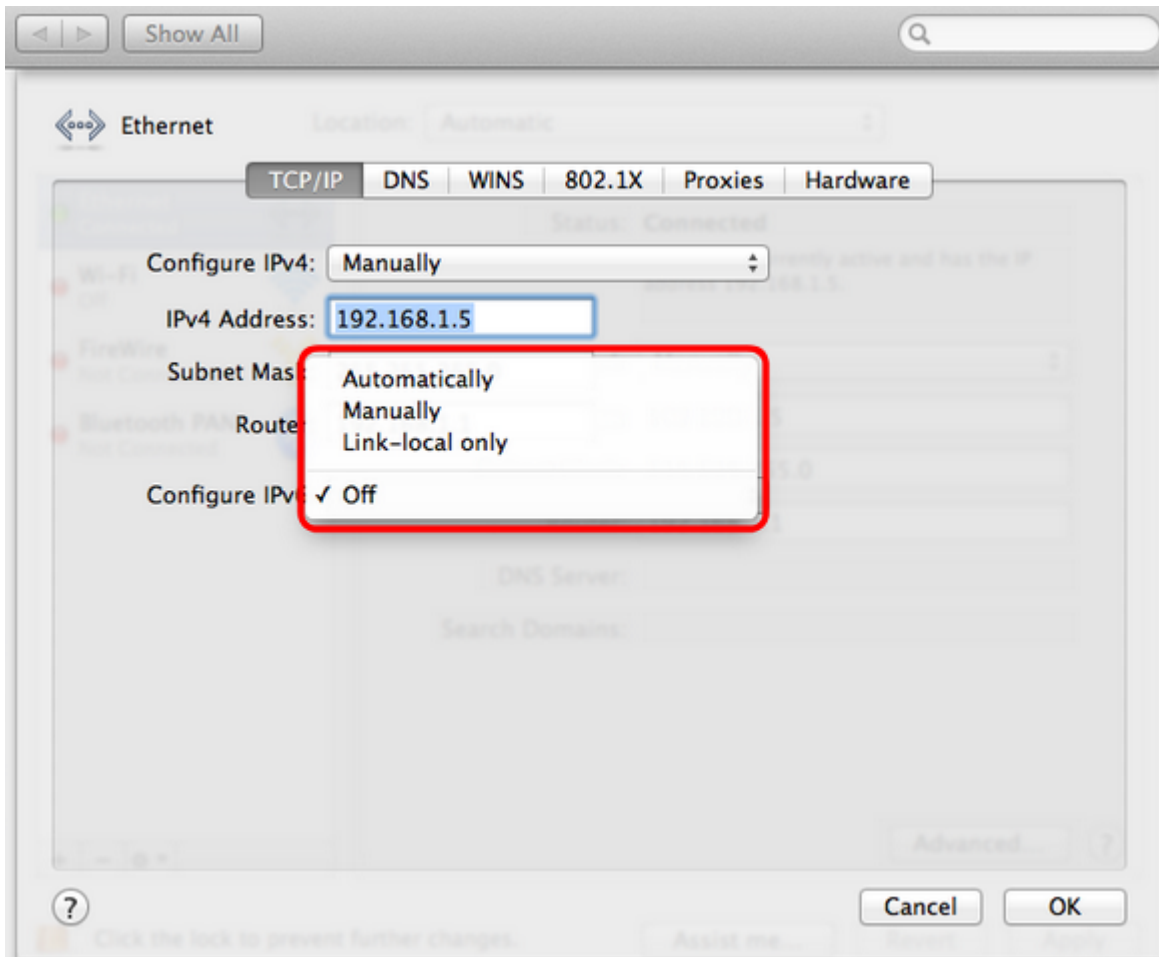
Step 3. Click **Save** at the bottom of the page to save changes.



Step 4. On the Mac, choose **Network Icon > Open Network Preferences** from the menu bar at the top right corner of the desktop. The *Network* page opens:



Step 5. On the Ethernet page, click **Advanced**.



Step 6. From the Configure IPv6 drop-down list, choose **Off**.

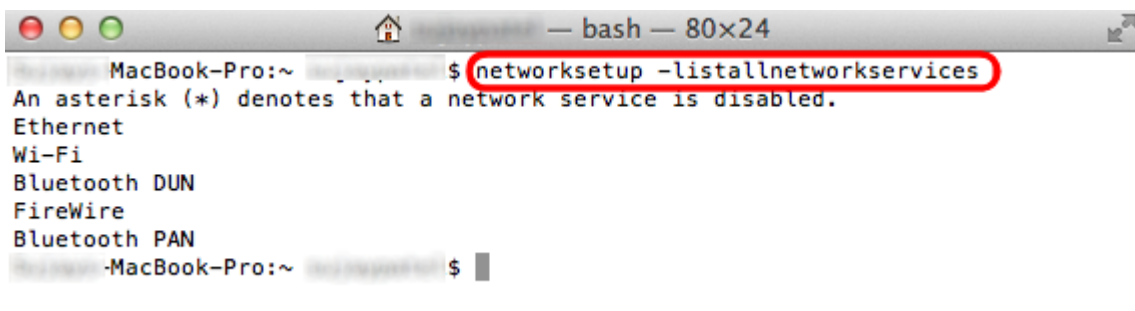
Step 7. Click **OK** to save the settings.

With Command Terminal

Sometimes due to security settings, Mac OS may not allow users to change the IPv6 settings. The Off option will not be available from the Configure IPv6 drop-down list. For such cases, please follow the steps below:

Step 1. On the Mac desktop, choose **Applications > Utilities > Terminal** from the dock.

Step 2. In the Terminal, enter **networksetup -listallnetworkservices**.



Step 3. Press **Enter**. All network services will be shown.

```
— bash — 80x24
-MacBook-Pro:~ $ networksetup -listallnetworkservices
An asterisk (*) denotes that a network service is disabled.
Ethernet
Wi-Fi
Bluetooth DUN
FireWire
Bluetooth PAN
-MacBook-Pro:~ $ networksetup -setv6off Ethernet
```

Step 4. Enter **networksetup -setv6off Ethernet**.

Step 5. Press **Enter** to disable the IPv6.