

# Export and Import ESA HAT to Add Multiple Entries

## Contents

[Introduction](#)

[Prerequisites](#)

[Requirements](#)

[Why to Export/Import a HAT Configuration](#)

[On-prem, Virtual ESA and CES Appliances Considerations](#)

[Current Sender Group Entries](#)

[Configuration](#)

[Export Host Access Table \(HAT\)](#)

[Preview the Exported File and Edit the Entries](#)

[Upload Modified File to Your ESA](#)

[Import a New Host Access Table \(HAT\)](#)

## Introduction

This document describes how to export the Host Access Table (HAT) from your ESA, manipulate the entries, and then import it back to your ESA.

## Prerequisites

Cisco Email Security Appliance (ESA) product knowledge, along with the basics of the Sender Group that are listed within the HAT and a user role that allows the action to export and import a HAT configuration.

## Requirements

- A sender group in which the intention is to add multiple entries.
- A list of senders or IP addresses that be added to a specific sender group.
- On-prem and vESAs need to have FTP enabled.
- A local FTP client installed.

## Why to Export/Import a HAT Configuration

Sometimes you have a big list of senders or IPs for a specific purpose. It can be to use them as relay, senders, or IPs that you trust; or a list of malicious IPs from a vendor that you want to add in a blocklist. And to add them all manually could seem to be a complicated and time intensive task.

## On-prem, Virtual ESA and CES Appliances Considerations

It is important to mention and emphasize the actions listed apply to all three types of devices. However, in the case of CES devices, once the HAT has been exported, you are advised to open a case with TAC so an engineer can download the exported HAT file and share it with you, so you can add the desired entries and then import it to your cloud device.

## Current Sender Group Entries

In this case, the modify Sender Group is the `BLOCKED_LIST`, to which you can add multiple entries to this sender group. These are the current entries of this sender group.

### Sender Group: `BLOCKED_LIST` - MailFlow-OUT

Sender Group Settings	
Name:	BLOCKED_LIST
Order:	2
Comment:	Spammers are rejected
Policy:	BLOCKED
SBRS (Optional):	-10.0 to -3.0
External Threat Feed (Optional): <i>For IP lookups only</i>	None
DNS Lists (Optional):	None
Connecting Host DNS Verification:	None Included

[<< Back to HAT Overview](#)

**Find Senders**

Find Senders that Contain this Text:  [Find](#)

**Sender List: Display All Items in List** Items per page

[Add Sender...](#)

Sender	Comment
<a href="#">cisco.com</a>	None
<a href="#">example.com</a>	None
<a href="#">.taclab.com</a>	None

[<< Back to HAT Overview](#)

## Configuration

### Export Host Access Table (HAT)

1. From the ESA GUI, navigate to Mail Policies > HAT Overview.
2. Click Export HAT at the bottom of the HAT box.

## HAT Overview

Find Senders

Find Senders that Contain this Text:

Find

Sender Groups (Listener: MailFlow-OUT ▾ )

Add Sender Group...

Order	Sender Group	SenderBase™ Reputation Score <span style="font-size: small;">?</span>											External Threat Feed Sources Applied	Mail Flow
		-10	-8	-6	-4	-2	0	2	4	6	8	+10		
1	ALLOWED_LIST												None applied	TRUSTED
2	BLOCKED_LIST	=====											None applied	BLOCKED
3	RELAYLIST												None applied	RELAYLIST
4	SUSPECTLIST					=====							None applied	THROTTLED
5	UNKNOWNLIST						=====						None applied	ACCEPTED
6	RELAY_O365												None applied	RELAYLIST
7	SMA												None applied	ACCEPTED
	ALL												None applied	ACCEPTED

Edit Order...

3. A new window opens and you type a name to identify the exported file. In this example, put **MyNewExportedHAT**, for the exported file. After you type the name, click **Submit**.
4. The HAT overview redisplays, and a message appears at the top of the window with this text **Success - HAT was exported.**
5. To check your exported file, go to **System Administration > Configuration File** and in the **Load Configuration** section, you see the file name from step 1.

## Configuration File

### Current Configuration

Configuration File:

Download file to local computer to view or save

Save file to this appliance

Email file to:   
*Separate multiple addresses with commas*

*Configuration file size: 601K*

*Passphrase Options:*

Mask passphrases in the Configuration Files  
*Note: Files with masked passphrases cannot be loaded using Load Configuration.*

Encrypt passphrases in the Configuration Files

### Load Configuration

Load Configuration:

Load a configuration file from the appliance:

ASYNCOS-MAIL-MIB.txt  
HAT-28-TZ  
IRONPORT-SMI.txt  
**MyNewExportedHAT**

Preview Selected File

Load a configuration file from local computer:  
 No file selected.

Paste your configuration in the space provided below:

*Warning! Loading configuration will permanently remove all of your current configuration settings. It is strongly recommended that you save your configuration before performing these actions.*

## Preview the Exported File and Edit the Entries

1. To modify the file, click **Preview Selected File**. After that, a new window is opened. All the information displayed in that format is what is contained in your HAT.
2. To modify a specific sender group (BLOCKED\_LIST), you can select all the text from the **Preview of Configuration File** window as it is and export it to a text editor to manipulate it.
3. Confirm the **BLOCKED\_LIST** section appears like this:  
BLOCKED\_LIST: cisco.com example.com .taclab.com sbrs[-10.0:-3.0] \$BLOCKED (Spammers are rejected)
4. To add entries, you can add them after the last entry. In this example, it is `example.com`, as shown here:  
BLOCKED\_LIST:

cisco.com example.com .taclab.com

**1.2.3.4 (Add IP via export method)**

**5.6.7.8 (Add IP via export method)**

**9.10.11.12 (Add IP via export method)**

**13.14.15.16 (Add IP via export method)**

**17.18.19.20 (Add IP via export method)**

**21.22.23.24 (Add IP via export method)**

**25.26.27.28 (Add IP via export method)**

**29.30.31.32 (Add IP via export method)**

**33.34.35.36 (Add IP via export method)**

**37.38.39.40 (Add IP via export method)**  
**41.42.43.44 (Add IP via export method)**  
**45.46.47.48 (Add IP via export method)**  
**49.50.51.52 (Add IP via export method)**  
**53.54.55.0/24 (Add subnet via export method)**  
**anotherexample.com (Add host via export method)**  
**ciscodummy.com (Add host via export method)**  
**taclab2.com(Add host via export method)**  
**sbrs[-10.0:-3.0]**  
**\$BLOCKED (Spammers are rejected)**

5. You have the option to add a comment between parenthesis.

---

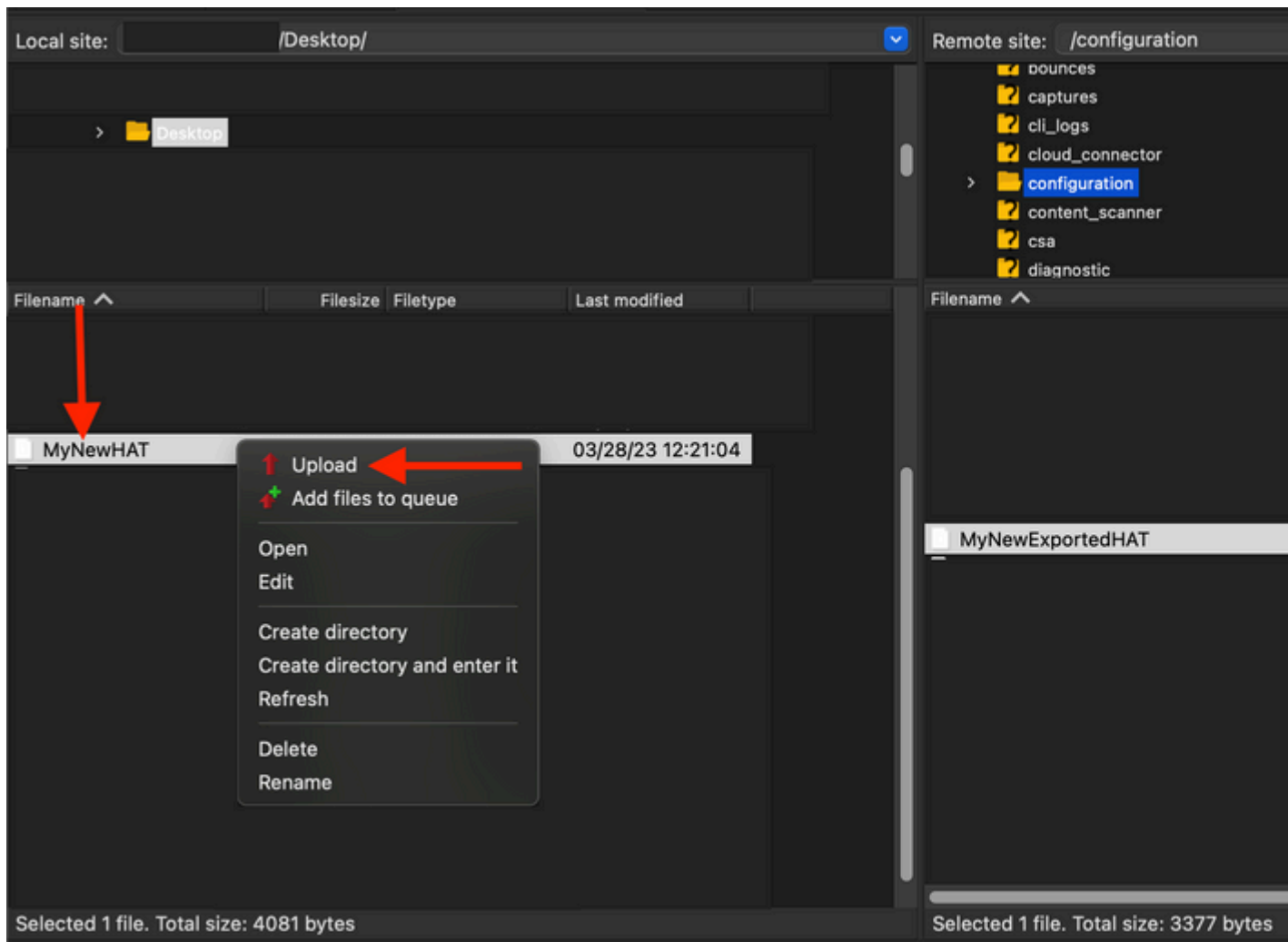
**Note:** To copy the exported HAT file to your local machine, you can also do it with an FTP client. If you check it from the Preview file part, it can be it easier for you to manipulate it.

---

## Upload Modified File to Your ESA

In this example, use an FTP client to upload the new HAT file to your ESA. This example uses Filezilla as the FTP client to connect to the ESA.

1. Once connected to the ESA by FTP, search for the location `/configuration` within the appliance.
2. When in that folder, several files are displayed, which includes the HAT file you exported earlier.
3. With the new modified file on your local computer, copy it to your device. In this example, the name of the new file is **MyNewHAT** and it was upload to the device. Select the file and click Upload.

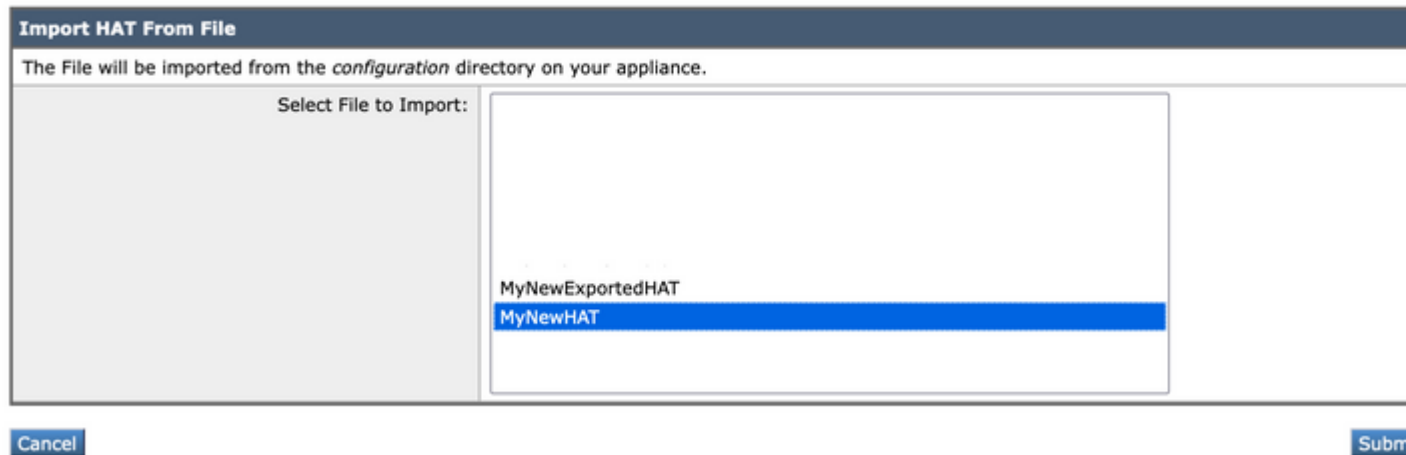


4. Once the new file is upload to the device, you can proceed to import it to the HAT overview section in your ESA appliance.

## Import a New Host Access Table (HAT)

1. From the ESA GUI, navigate to Mail Policies > HAT Overview.
2. From there, click Import HAT and select the name that contains the new entries and click Submit.

### Import HAT



3. A prompt window shows Importing will replace all existing HAT entries. Click Import to confirm the upload.
4. At the top, you see a message that indicates the number of entries imported.

5. To view the new changes, access the sender group, which in this example is: BLOCKED\_LIST.

Sender List: Display All Items in List	
<a href="#">Add Sender...</a>	
Sender	Comment
cisco.com	None
example.com	None
.taclab.com	None
1.2.3.4	Adding IP via import method
5.6.7.8	Adding IP via import method
9.10.11.12	Adding IP via import method
13.14.15.16	Adding IP via import method
17.18.19.20	Adding IP via import method
21.22.23.24	Adding IP via import method
25.26.27.28	Adding IP via import method
29.30.31.32	Adding IP via import method
33.34.35.36	Adding IP via import method
37.38.39.40	Adding IP via import method
41.42.43.44	Adding IP via import method
45.46.47.48	Adding IP via import method
49.50.51.52	Adding IP via import method
53.54.55.0/24	Adding subnet via import method
anotherexample.com	Adding host via import method
ciscodummy.com	Adding host via import method
taclab2.com	Adding host via import method
<a href="#">&lt;&lt; Back to HAT Overview</a>	

6. As you can see, new entries have been added.