

Configure Directory Connector to Soft-Delete Users in Dry Run

Contents

[Introduction](#)

[Prerequisites](#)

[Requirements](#)

[Components Used](#)

[Background](#)

[Remove the User from Active Directory](#)

[Open Active Directory Users and Computers](#)

[Use PowerShell](#)

[Use Directory Connector to Update Webex Control Hub](#)

[Perform a Synchronization Task to Change Synced User to Soft-Deleted User](#)

[Perform a Synchronization Task to Trigger the Hard Delete of the User](#)

[References](#)

Introduction

This document describes Directory Connector release 3.7.3 enhancement to display soft-delete users under Dry Run reports.

Prerequisites

Requirements

- Microsoft Windows Server 2003, 2008R2, 2012, 2012R2, 2016, 2019
- It is required to use version, at the minimum, Cisco Directory Connector 3.7.3000

Components Used

- Microsoft Windows Server 2019
- Cisco Webex Directory Connector 3.7.3000

The information in this document was created from the devices in a specific lab environment. All of the devices used in this document started with a cleared (default) configuration. If your network is live, ensure that you understand the potential impact of any command.

Background

This article shows how to delete users from the Active Directory to flag them as soft-delete users and use the Dry Run report to directly delete them from the Webex Cloud in the next synchronization with Directory Connector. The Webex Administrator can now force deletion of users permanently in the next synchronization by selection of partial users or all users.

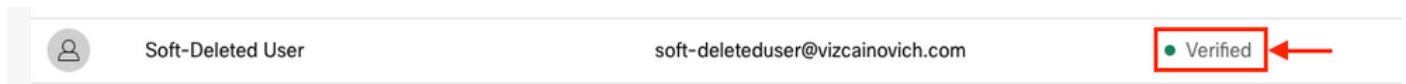
An Administrator can delete a user from the the Active Directory and the user is marked as soft-delete in Webex Cloud after the synchronization task is performed. By design, soft-delete users are hard deleted after 7 days. During the soft-delete period of 7 days, the Administrator is unable to add another new user with the same email address.

In the past, the Administrator who needed to hard delete the soft-delete user from the Webex Cloud opened a TAC Case to work with the Engineering team and then to add the new user via the synchronization task.

With this enhancement, the Webex Administrator can now force deletion of those users permanently in the next synchronization task by selection of partial users or all users without the need to engage Cisco TAC.

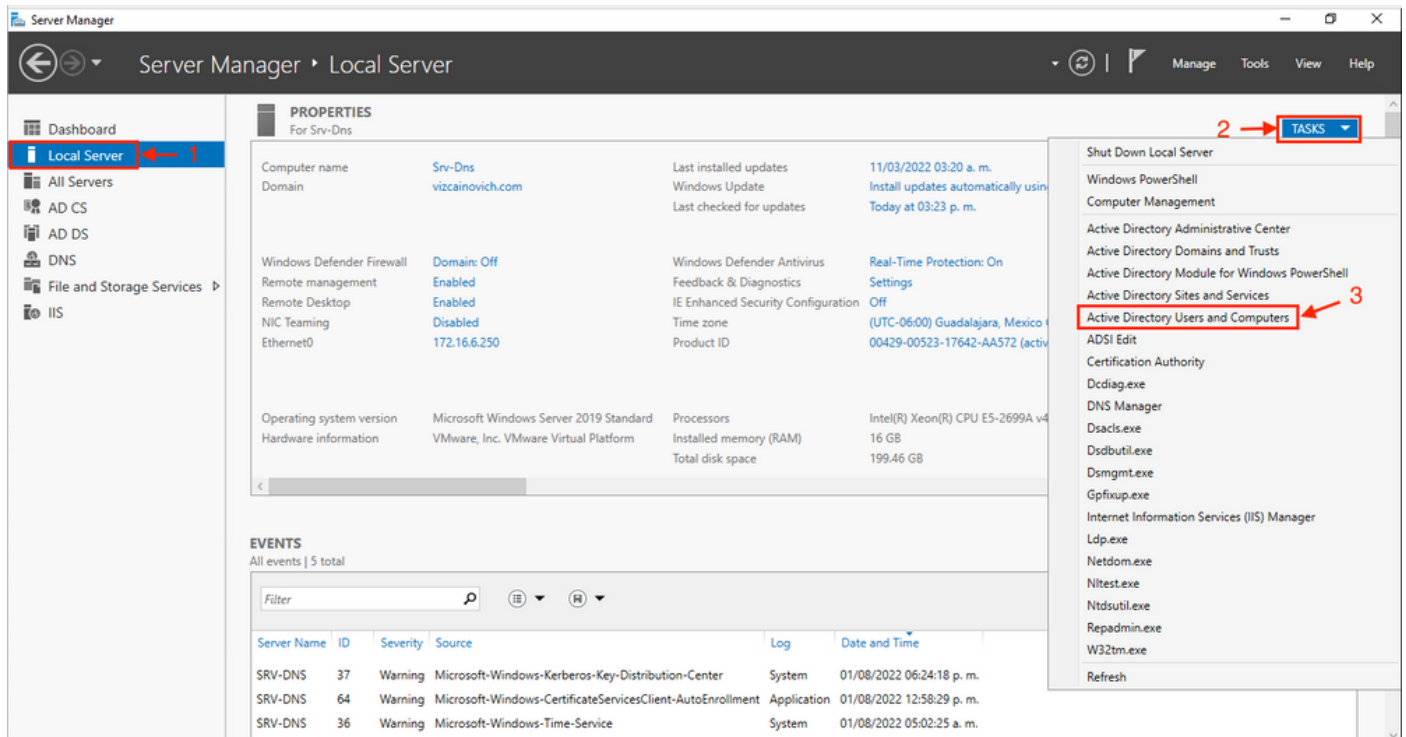
Remove the User from Active Directory

In this example, the Active (Verified) user with UUID 108cf4e8-150c-4e60-8a92-594b9a25e65d is deleted.

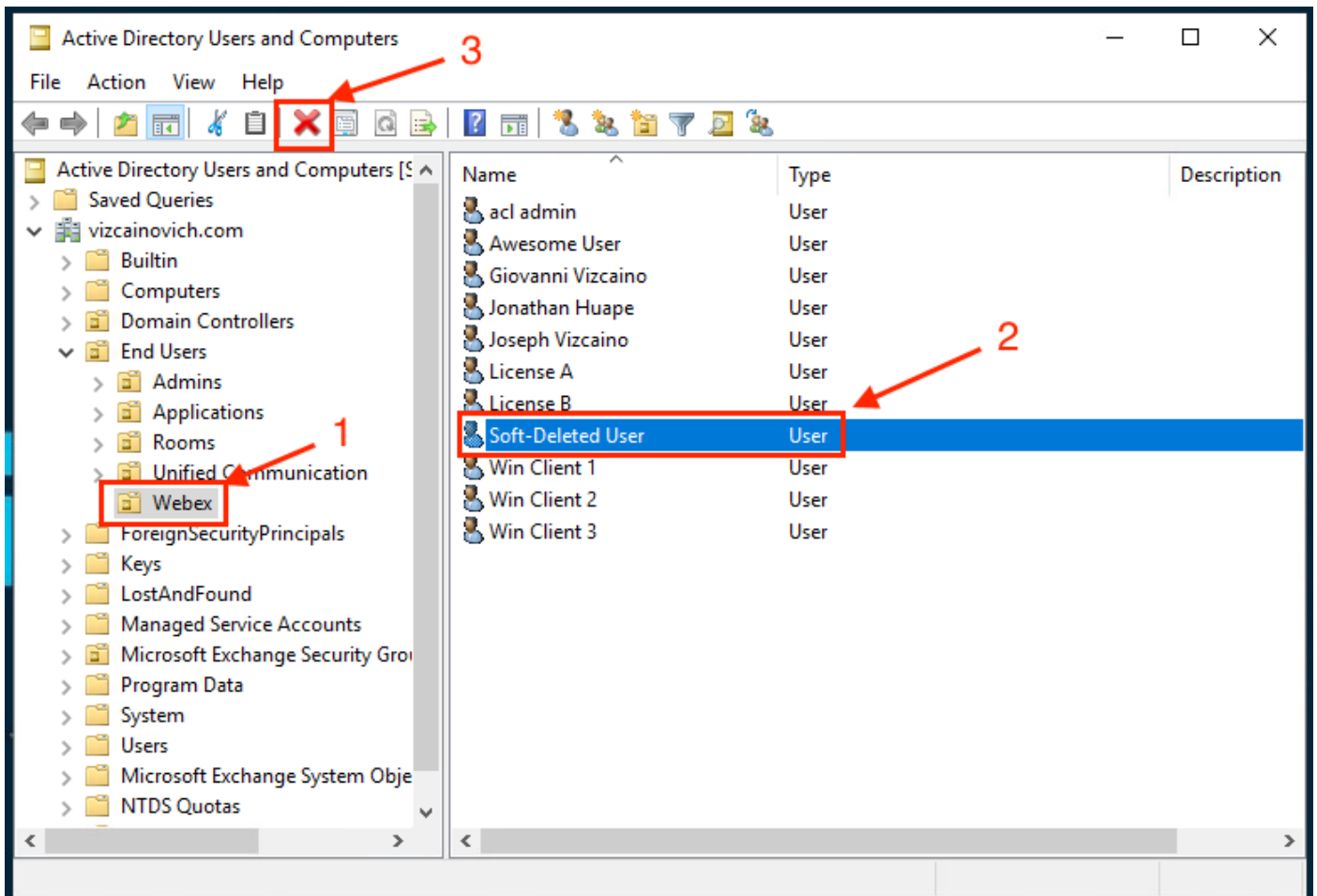


Open Active Directory Users and Computers

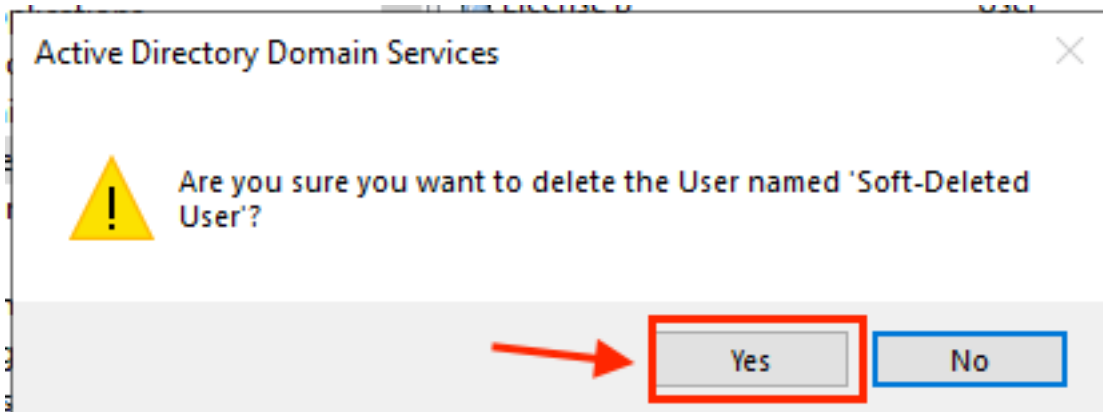
From the Windows Server, navigate to **Server Manager > Local Server > TASKS > Active Directory Users and Computers**.



Look up the desired user to delete from the specific Organizational Unit (OU), select the user, and click **Delete** at the Action bar.



Confirm the deletion task.



Use PowerShell

You can remove user objects from an Active Directory domain with the PowerShell cmdlet.

Remove-ADUser

This cmdlet is a part of the ActiveDirectory Module for Windows PowerShell, which must be pre-installed and imported into the PowerShell session with the command:

```
Import-Module activedirectory
```

```
Administrator: Windows PowerShell
Windows PowerShell
Copyright (C) Microsoft Corporation. All rights reserved.

PS C:\Users\Administrator> Import-Module activedirectory
PS C:\Users\Administrator>
```

You can delete a user with the username in several ways, by selection of: distinguished name (DN), GUID, security identifier (SID), or SAM account name. To remove the user with the user logon name, run the command:

```
Remove-ADUser soft-deleteduser

Administrator: Windows PowerShell
Windows PowerShell
Copyright (C) Microsoft Corporation. All rights reserved.

PS C:\Users\Administrator> Import-Module activedirectory
PS C:\Users\Administrator> Remove-ADUser soft-deleteduser
```

A prompt appears that asks you to confirm the removal of the user object from the domain. To delete a user, press Y and press the Enter key.

```
Administrator: Windows PowerShell
Windows PowerShell
Copyright (C) Microsoft Corporation. All rights reserved.

PS C:\Users\Administrator> Import-Module activedirectory
PS C:\Users\Administrator> Remove-ADUser soft-deleteduser

Confirm
Are you sure you want to perform this action?
Performing the operation "Remove" on target "CN=Soft-Deleted User,OU=Webex,OU=End Users,DC=vizcainovich,DC=com".
[Y] Yes [A] Yes to All [N] No [L] No to All [S] Suspend [?] Help (default is "Y"):
```

To remove the AD user without confirmation prompt, add `-Confirm:$False` at the end of the command:

```
Remove-ADUser soft-deleteduser -Confirm:$False

Administrator: Windows PowerShell
Windows PowerShell
Copyright (C) Microsoft Corporation. All rights reserved.

PS C:\Users\Administrator> Import-Module activedirectory
PS C:\Users\Administrator> Remove-ADUser soft-deleteduser

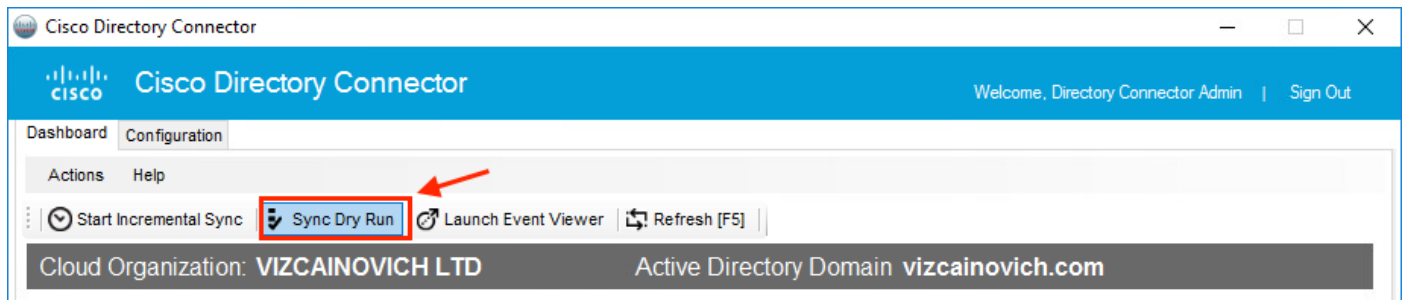
Confirm
Are you sure you want to perform this action?
Performing the operation "Remove" on target "CN=Soft-Deleted User,OU=Webex,OU=End Users,DC=vizcainovich,DC=com".
[Y] Yes [A] Yes to All [N] No [L] No to All [S] Suspend [?] Help (default is "Y"): n
PS C:\Users\Administrator> Remove-ADUser soft-deleteduser -Confirm:$False
PS C:\Users\Administrator>
```

The user was deleted successfully from Active Directory.

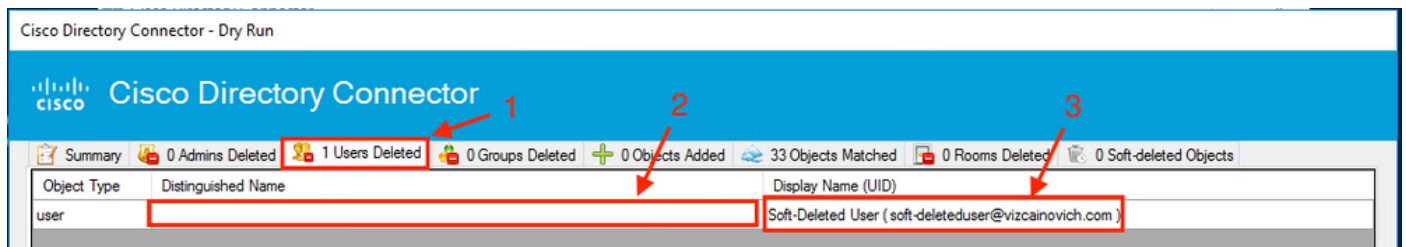
Use Directory Connector to Update Webex Control Hub

Perform a Synchronization Task to Change Synced User to Soft-Deleted User

From Cisco Directory Connector, perform a Dry Run task to verify the user was deleted.

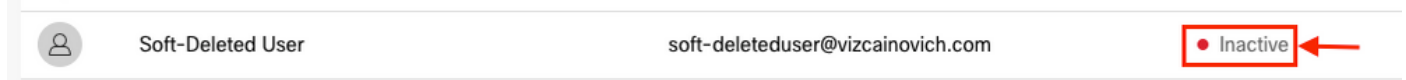


From the generated Dry Run report, the user does not have Distinguished Name information, which means the user is no longer present in Active Directory² and is to be deleted from the Webex Cloud³ in the next synchronization.



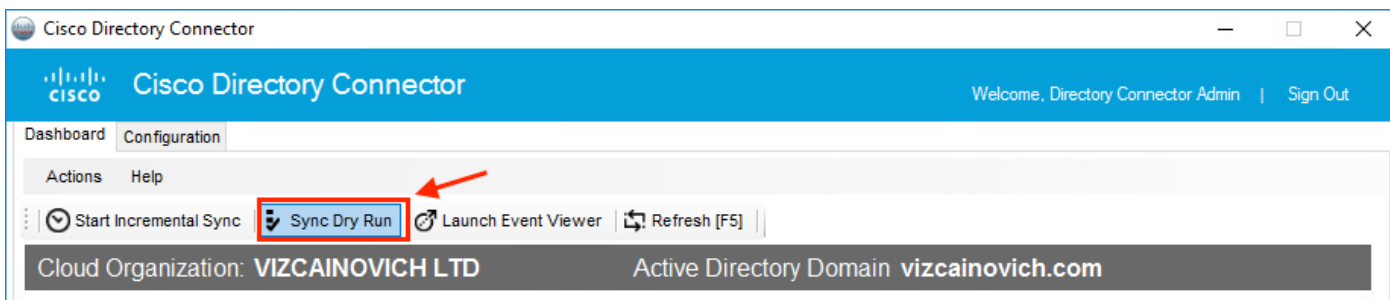
Run an Incremental Synchronization task to verify the user has changed to Inactive status from the Webex Control Hub.

```
2022-08-02 00:44:19,913 INFO sync-task-runner-1
com.cisco.codev.identity.dirsync.engine.handler.dirsync.DirSyncUtils.createSummaryLog [tracking:
] [org: 904cbfb5-0f49-4339-a40c-ad473ac7ab24] [domain: adds-vizcainovich.com] [user: ] [session:
3f5e36b2-bcc6-4dfb-bc0f-c7c4edb61388] [task: 867b27c4-4fb3-4eb3-9cfb-86c65c3cf84e] -
Synchronization Summary
StatusCode: SUCCESS
Domain: adds-vizcainovich.com
Incremental Synchronization: yes
Start Time: 2022-08-02T00:44:09Z
End Time: 2022-08-02T00:44:19Z
Object Added: 0
Object Deleted: 1
Object Modified: 0
Warning Count: 1
Avatar Failure Count: 1
Failure Count: 0
```



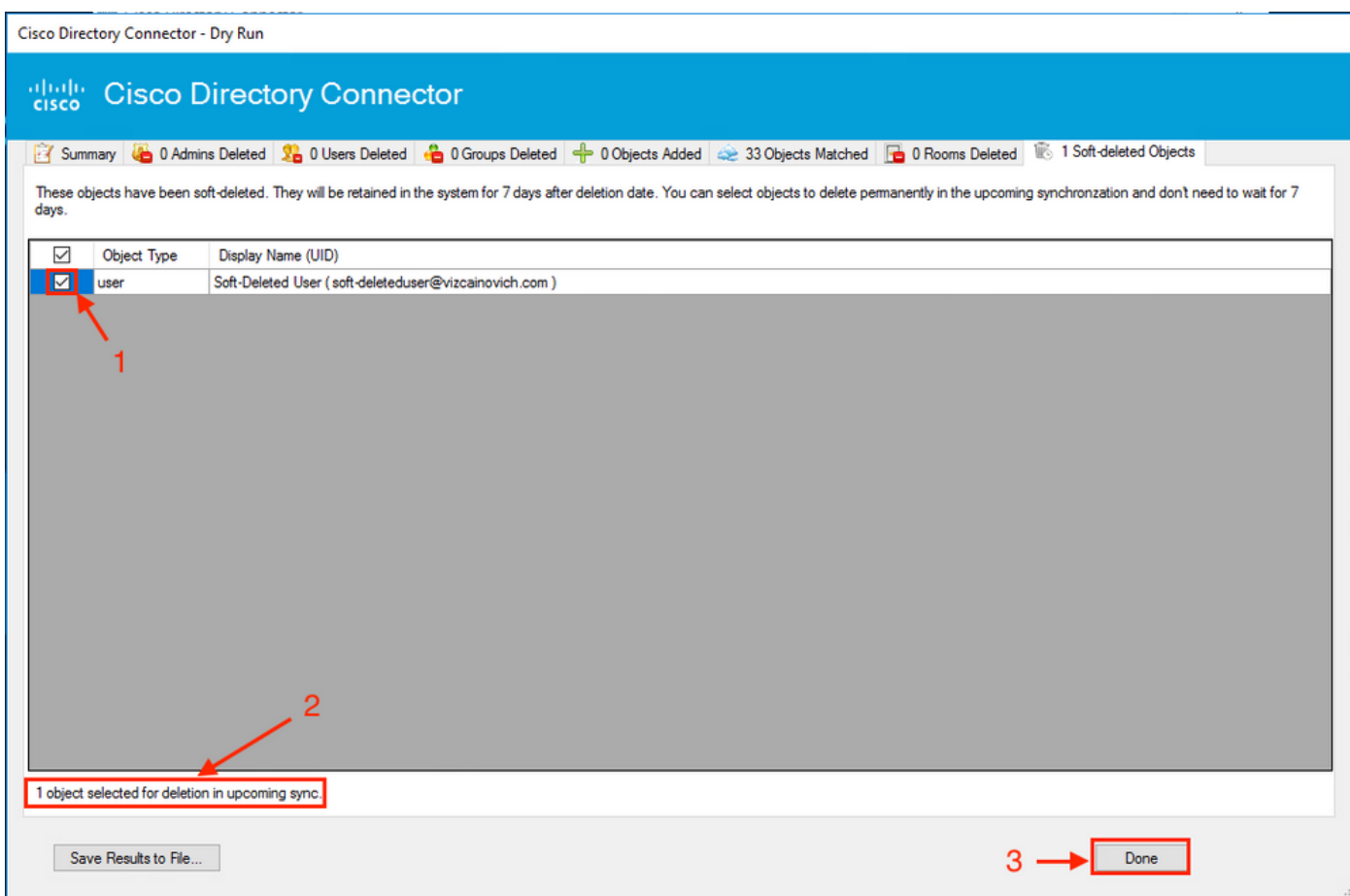
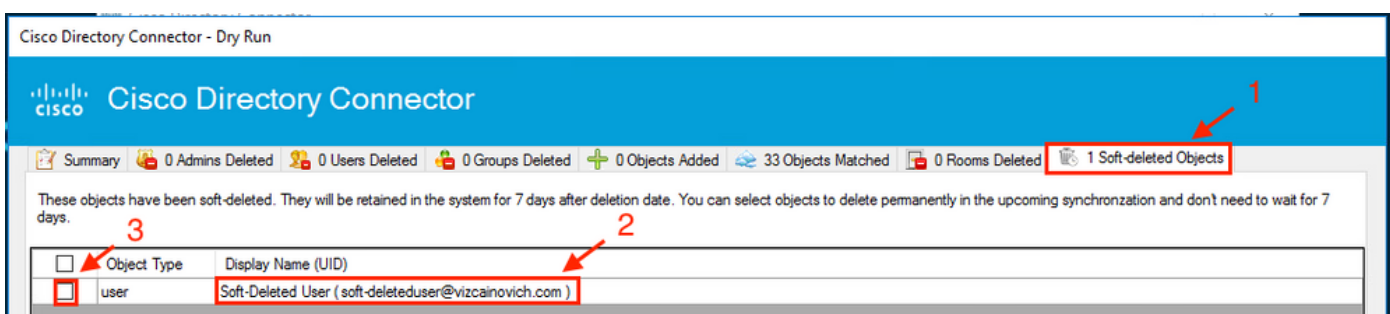
Perform a Synchronization Task to Trigger the Hard Delete of the User

From the Cisco Directory Connector, perform a Dry Run task to see the **Soft-deleted Objects** tab.



From the generated Dry Run report, the user is now in the **Soft-deleted Objects** tab.

To immediately delete the user, the Administrator can check the user and the user is hard-deleted in the next synchronization.



Run an Incremental Synchronization task to verify the user is successfully hard deleted from the Webex Cloud, which means the user is not present anymore in the Webex Control Hub.

] [org: 904cbfb5-0f49-4339-a40c-ad473ac7ab24] [domain: adds-vizcainovich.com] [user:] [session: 2abf8994-0fa0-4f7d-a56c-3b306b6a70a1] [task: 0eb43a7b-82b4-49dc-87fc-007476722f80] -

Synchronization Summary

StatusCode: SUCCESS

Domain: adds-vizcainovich.com

Incremental Synchronization: yes

Start Time: 2022-08-02T01:19:53Z

End Time: 2022-08-02T01:20:04Z

Object Added: 0

Object Deleted: 0

Object Modified: 0

Failure Count: 0



Soft-Deleted User

soft-deleteduser@vizcainovich.com

● Inactive



References

[Delete Users Permanently After Soft Delete](#)

[Directory Connector release notes - Announcements](#)