


FM-SHARK-16

 Fluidmesh is now part of Cisco.

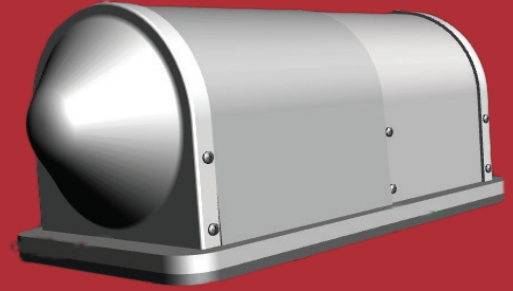
High Speed Rail Antenna

FEATURES

- Dual feed, dual slant $\pm 45^\circ$, linear polarization
- Designed for metallic or non-metallic roof mounting, no ground plane required
- Extremely rugged purpose built for rail applications
- Symmetrical patterns, maintains same pattern performance over each polarization
- High port-to-port performance correlation

CUSTOM CONFIGURATIONS

- Painting or anodizing available
- Custom mounting plate and bolt pattern available
- Custom connector location available
- Dual H/V polarization available
- Circular polarization available
- Other connector options available



RAIL CERTIFICATION

Meets EN50155 requirements

ELECTRICAL SPECIFICATIONS

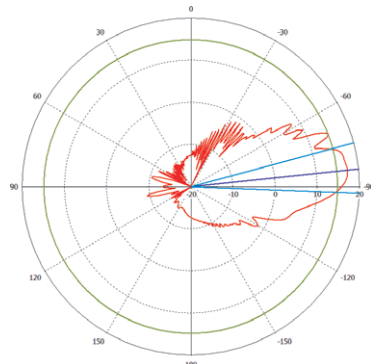
Nominal Impedance	50 ohms
Polarization	Dual Slant 45° , Linear
Bandwidth	4.9-5.9 GHz
Gain	16 dBi \pm 0.5 dB
VSWR	< 2.0 : 1

ELECTRICAL SPECIFICATIONS

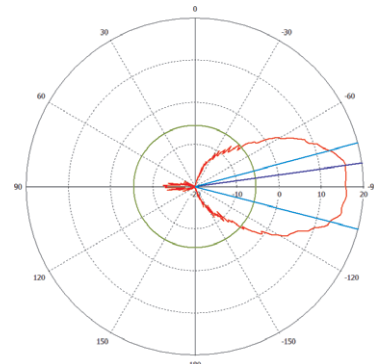
Free Space, Non-Metallic Ground Plane	H-Plane Beamwidth	28°
	E-Plane Beamwidth	28°
Ground Plane Mounted Performance	H-Plane Beamwidth	30°
	E-Plane Beamwidth	18°
	Front-to-Back Ratio	25 dB

MECHANICAL SPECIFICATIONS

Dimensions	14.8 x 6.5 x 6.3 inches (376 x 165 x 160 mm)
Weight	8.5 lbs
Connector Options	QMA Female



ELEVATION PATTERN



AZIMUTH PATTERN

NOTE: Radiation patterns reflect ground mounting.